

# Fantom Creator™



Version 0.9, Build 21

*(This page is intentionally left blank.)*



# Fantom Creator™

## Table Of Contents

Introduction.....	5
Basic Concepts.....	7
<b>The Fantom Document</b>	
Main Screen.....	8
Fantom Object Views.....	10
Keyboard Optional Display.....	12
Wave Optional Display.....	13
<b>Working with Objects</b>	
Adding Objects.....	14
Deleting Objects.....	15
Editing Objects.....	16
Renaming Objects.....	17
The Fantom Player.....	18
Preparing and Re-importing.....	19
Editing Single Samples Externally.....	21
Exchanging Objects.....	22
Auditioning Samples and Multisamples.....	23
Importing External Instruments.....	24
<b>Editors.....</b>	
The Patch Editor.....	26
The Tone Editor.....	27
The Multisample Editor.....	28
The Sample Editor.....	29
The Performance Editor.....	30
The Part Editor.....	31
<b>AutoSampler</b>	
Introduction.....	32
Audio/MIDI.....	33
Placement.....	33
Recording.....	34
Processing.....	35
Switches.....	35
Parameters.....	35
<b>Menus</b>	
File.....	36
Patch/ Performance.....	37
Tone/Part.....	38
Multisample.....	39
Sample.....	40
View.....	41
Help.....	42
Gear Menus - Patch/Performance.....	43
Gear Menus - Multisample.....	44
Gear Menus - Sample.....	45

**Preferences**

General.....46

Colors.....47

Import.....47

Export.....47

Data Processing.....48

Audio/MIDI.....49

**Support**

Troubleshooting.....51

FAQ.....51

Bug Reports.....51

Contacting Technical Support.....53

Updating.....54

Contact Us.....55

Credits.....56

# Fantom Creator™

## Introduction

**Fantom Creator™** is a powerful Patch, Performance/LiveSet, Multisample, and Sample creator/editor for Fantom workstations, including the Fantom-S, Fantom-X, Fantom-XR, and Fantom-G.

The Fantom line of workstations are a well established new generation Workstation-style keyboard system that has excellent sounds and advanced functionality, for superior usage in the studio and playing live. The most immediate gratification of the Fantom is playing it's onboard sounds, which are top- shelf and professional standard. However, the Fantom also allows for playback of user-defined multisampled keymaps (called "Multisamples" on the Fantom) with the same possibilities as the onboard ROM Multisamples. This functionality is entirely under the **Sampling** button on the Fantom.

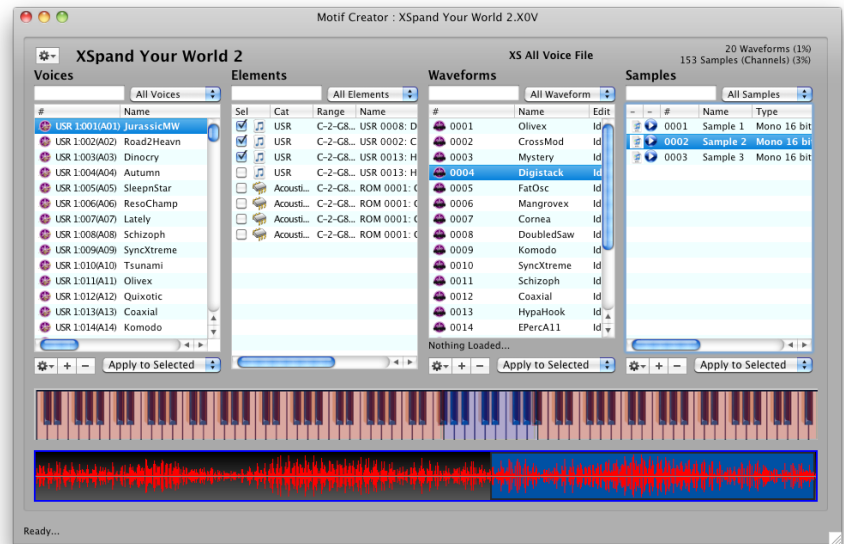
Although the Fantom is a little less flexible then the older specialized hardware samplers (e.g. Akai S-5000/Z-Series, Emu Emulator 4, Ensoniq ASR-10, Roland S-7x and so on), and more less so then powerful software samplers such as Kontakt, it is still very powerful, and with the right software platform to assist in creating these sampled Multisamples and Patches, the Fantom can go beyond it's stock sounds and fly high with your own custom Patches.

### That is the goal and stated purpose of Fantom Creator.

Like most (if not all) hardware musical instruments, the onboard display and provided access do not give access to the Fantom user-sampled area exceptionally well. Some Supermen have used it and worked with it, but among us Mere Mortals it's "in and out", since it is slow and difficult not only to view the total range of information, but also to apply new edits etc. Again, Fantom Creator leverages the natural power of your computer to access, display, and arrange information that it's a perfect and powerful bridge to create and edit Fantom user-created content.

You will notice that a significant difference between Chicken System's **Fantom Creator™** and Roland's own provided Fantom Editor is that the Fantom Editor communicates via MIDI or USB to the Fantom ITSELF, whereas **Fantom Creator™** simply works with Fantom files themselves. This is because of lacking functionality in the Fantom itself; it does not allow user wavedata to be transferred or detected through MIDI or USB. That is a significant omission in the Fantom Editor; although the immediate Program editing and librarian functions are wonderful, there is no access to the user Multisamples. In fact, on older Fantom models the editor actually crashes when encountering a user Multisample.

**Fantom Creator™** takes advantage of only access to user Multisample data - via the files themselves. **Fantom Creator™** is practically a virtual Fantom specialized for editing. You can make your own user Multisamples, edit and create your own Samples within those Multisamples, and much more. Fantom Creator also allows innovate ways to listen and audition those sounds. Since it's not a Fantom, it can't substitute for it, but with sampled sounds you can come awfully close. Most of the time, we foresee Fantom users to operate **Fantom Creator™** to take care of the sampled side, since it more clear, powerful, and efficient then the Fantom itself, but when it comes time to tweak the sounds and do the real-time



parameter editing, we expect them to write the files and read them into Fantom, edit away, then resave. **Fantom Creator™** also includes management of ROM data. Renaming objects (Patches, Multisamples, etc.) is a breeze on **Fantom Creator™**. You can manage your Categories (sometimes the center of most Fantom user's experience!) in new powerful ways beyond what the Fantom itself can do. You can even set up a library of Patches and create your own compilations to be written into a file for particular uses.

**Fantom Creator™**, while powerful, is still a simple application. It was designed to give you easy and intuitive access to Fantom data, with no funny business or confusing Corvette-looking widgetry.

---

Some notes regarding the documentation:

This document is synced to the **Fantom Creator™** version denoted on the cover of this document. It is a dynamic document and often is revised with every major, minor, or even build of **Fantom Creator™**.

In this document, the term "right-click" also refers to "control-click" on a Mac. Only "right-click" will be used. Similarly, "Preferences" is term for different optional parameters that can be set in the program; on the Mac you will see the word "Preferences", but on Windows you will see "Options". In this document, Preferences will be used. Graphics are all Mac, but look very similar to the Windows version.

Since the Fantom regards the middle C key on a keyboard (MIDI note 60) as C3, by default Fantom Creator™ shows the textual representation of MIDI note 60 as C3. This is the non-US representation. However, if you are more used to seeing C4 as middle C (like GigaStudio or other US models - or even some varied non-US samplers), you can change this in Preferences- General.

If you are a registered owner, you are qualified for free updates for the life of the program. You can download these from your program using the Check for Update feature, or from the Chicken Systems Update Area.

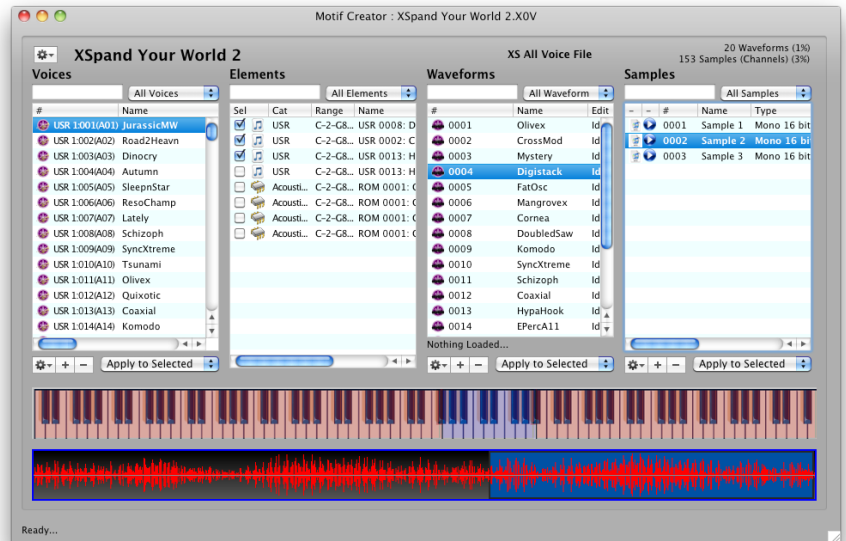
## Basic Concepts

The Fantom Creator™ Fantom Document represents a single Fantom folder structure. It can be one that is existing, or a new one that hasn't been saved to disk yet.

Your experience with Fantom Creator™ revolves around creating a new (or opening an existing) Fantom structure into a Fantom document, editing the objects within that document, then saving the document as a Fantom structure. This saves all objects, such as Patches and Multisamples, into a single file/folder set.

A Fantom File/Folder Set contains the SVD file, which contains the Patch, Multisample, and Performance information, and the Samples, represented as WAVE files, inside the 'SMPL' folder within the Fantom folder structure.

*(Note (Fantom-S/X only): the Fantom sample format is technically mono. However, there is a concept of stereo samples and is fully reflected in Fantom Creator. What this means is that when there are two sample objects (left and right), Fantom Creator treats it as one stereo sample. We admit it is confusing because within the Fantom structure, the sample IS actually stereo, but the next index does not exist. Still, this is worth noting just in case you are interested.)*



The **Fantom Document** shows you the most important aspects of the Fantom files: the Patches, the Tones within each Program, the Multisamples, and the Samples within the Multisamples. These are represented in four Lists; the Patches with the Tones, and the Multisamples with the Samples. There is also a Performance List and a Part List, shown in the Performance View.

From there, you are free to add, delete, or edit any of the objects to your needs. For more information on the Fantom Document, where you'll do the majority of your work, see **The Fantom Document** elsewhere in this document.

Each object has an Editor: There is a Patch Editor, Tone Editor, Multisample Editor, and Sample Editor; and additionally, a Performance Editor and Part Editor. One editor can be open at a time, and it edits the current selection in the list on the Fantom document. For more information on Editors, please see the Editors section elsewhere in this document.

## The Fantom Document

The **Fantom Document** represents a single SVD file and it's samples within the SMPL folder, existing or a new one that hasn't been written yet. Your experience with Fantom Creator revolves around creating a new or opening an existing Fantom file, changing the objects within using the Fantom Document, then saving the document which saves everything to the a new or existing Fantom file, for immediate use in your Fantom.

### Lists

The Lists on a normal Fantom document show the principal objects; the Patches (List 1) and the Multisamples (List 3). The Tone List (List 2) shows the Tones contained in the currently selected Patch, and the Sample List (List 4) shows the Samples in the currently selected Multisample.

There are two other Lists; the Performance List and the Part List. These appear when you are in the Performance View.

The purpose of the List is so you can view the contents of the File that is represented by the document and apply functions to change, edit, or build up the file.

### Views

Speaking of Views, the Fantom document interface is highly customizable, so you can either have all the List on the document at one time (admittedly crowded), or you can see only what you want to see for handy editing. The Views are:

- **Patch/Tone/Multisample**
- **Multisample/Sample**
- **Performance/Part/Patch**
- **"Four Corners" (Patch & Tone on top, Multisample & Sample on the bottom)**
- **Full View**

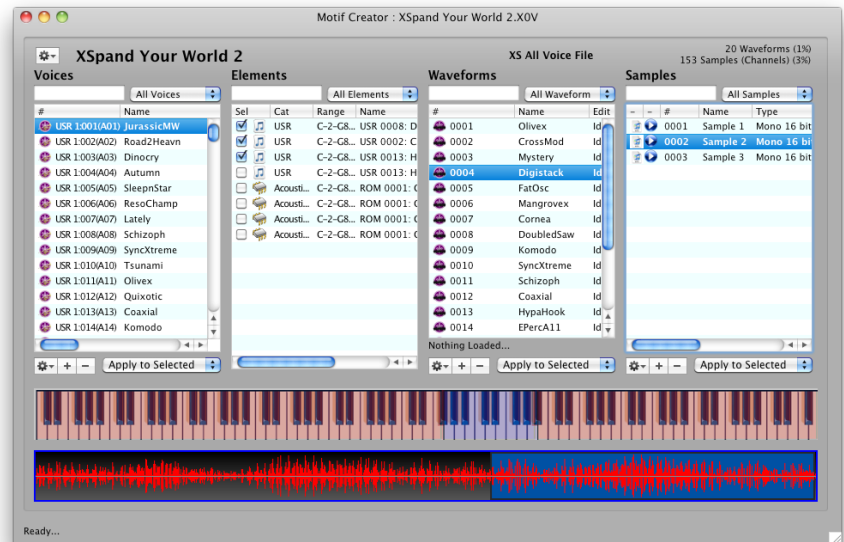
You can choose which view you'd like with the Gear menu on the upper right, or the top level Views menu. For more information of Views, see the Views section in this manual.

### Range Maps

On top of the Tone List and the Part List you can have Range Maps perched on top of them. This allows for graphical editing of the Ranges (Key and Velocity) of Each Tone or Part. Key is selected by the top button to the left of the Range Maps, Velocity by the second button. A green color indicates which Range you are viewing. The third button (yellow) gives you a context menu by selecting it, giving you some auto-mapping options, plus some viewing options. If you have no immediate use for them, you can hide them using the context menu or the Views top-level menu.

Having the Range Maps mounted on top of each other makes it easy to see how Tones or Parts are arranged against each other. Alter the range by simply grabbing and pulling each end with the mouse. Selecting the middle of the range allows you to slide it back and forth.

(Remember, these Ranges are actually "Limits"; that is, with an Tone, you are restricting the key/velocity response. The Multisample the Tone refers to may have information beyond the limits, you are simply creating a smaller "window" into the Multisample (or Patch).



Also remember that the Ranges do not appear on Rhythm Kits, since there are no Key/Vel Ranges to deal with, just the natural 1-Key limit of a Rhythm Kit Tone.

### **Optional Displays**

There are two option items you can display on a Fantom Document; the Keyboard Display and the Wave Display. The Keyboard Display shows the contents of the Multisample that is selected in the Multisample List, and also responds to dragging and dropping of external Samples into that Multisample. It makes mapping incoming samples a breeze. The Wave Display shows the Multisample of the Sample selected in the Sample List, for easy recognition.

For more information on the Optional Displays, see either the Keyboard Display or the Wave Display areas of this document.

### **Filtering Lists**

The text field and popup menu above each list filter the lists contents. Typing into the text field filters the list based on what you typed; e.g. typing in "Trum" (without the quotes) in the text field above the Program List brings up Patches with the names "Trumpet Short", "TrumLngBrght", and "Guitar Strum". Multiple criteria can be inputted by separating them with commas.

The popup menu varies with each List. but give you common ways of making each list more specific; e.g in the Sample List you can view just the external samples.

### **Performing Functions on List Objects**

The whole purpose of Fantom Creator is to add, edit, delete and change objects. Patches can't be deleted per se but they can be initialized. A "blank" Program is one that starts with the letters "INIT" (case insensitive); initialized Patches usually have no sampled Multisamples referenced, just has the first Tone enabled, and is set to the first Piano Multisample.

Mostly what you'll edit in Patches is the contents of the Tones. Other than providing a set of real-time parameters, a Tone's main purpose is to playback a Multisample, whether it is a ROM Multisample or sampled (RAM) Multisample.

RAM Multisamples are listed in the Multisamples List. A RAM Multisample is a collection of non- overlapping samples within a MIDI Keyboard with variable Velocities. By selecting a Multisample in the Multisample List, the associated Samples show in the Samples List, with their properties.

There are many ways of adding, editing, and deleting objects. Most of these are standard computer methods. More specific information will be given in other places in this document, so we'll cover them briefly here.

You can use the Gear and Plus (+) and Minus (-) buttons below each list. Clicking the Gear button exposes a Menu that is very much like the top-level menus titled Patches-Tones- Multisamples-Samples. You can apply the function to selected objects in the list, or to all of them, by selecting the popup menu next to the buttons (Apply to All, Apply to Selected).

Ctl/Right-clicking on a list brings up a Context Menu which is usually identical to the Gear Menu for that list. It ALWAYS applies to the selected items in that list.

Dragging objects is a very powerful editing method. All drags and drops do what you would think they would do. If you drag a Waveform and drop it on a Tone, it will set that Tone to that Multisample. If you drag a couple of WAVE files from outside Fantom Creator and drop them on the Sample List, it will automatically add those WAVE files to the Samples List. You can also drag Patches, Multisamples, or any object from one Fantom document to another.

The INS and DEL buttons are active to make new Multisamples or Samples, and Backspace serves as another DEL button.

Two very powerful functions are included on the Main Screen; Importing and Preparing. These are covered in depth in other areas of this document. Consider turning this viewer off in Preferences.



# Fantom Object Views

The Fantom Creator™ Fantom Document has several views so you can work effeciently. Sometimes it is important to get a birds eye look at your Fantom structure, and sometimes you need to only look at a portion of the structure.

Views can be access either by the Views top-level menu, or the Master Gear Menu on the upper right of the document.

Fantom files (or we call them Banks) have up to 6 components to them:

**Patches**  
**Tones**  
**Multisamples**  
**Samples**  
**Performances (All Files only)**  
**Parts (All Files only)**

Generally the Program is the Queen of the Bank, because so much centers on the Program. Because of this, most Views have at least something to do with the Patches.

There are 5 Views, separated into 3 Categories: **General**, **Detailed**, and **Special**.

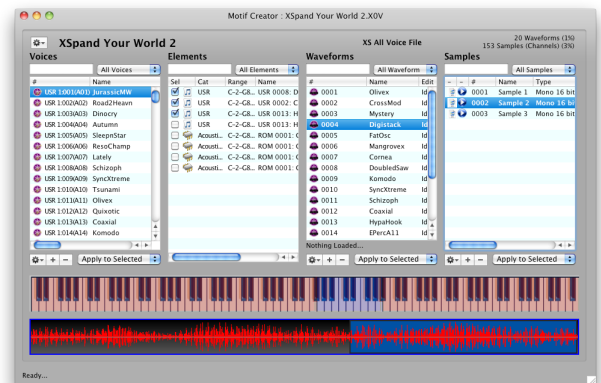
There are two General Views:

## Full View

This includes from right to left: Patch-Tones, Multisample-Samples.

This is a good general view of the Bank. You can select Patches and see the Tones that work within them.

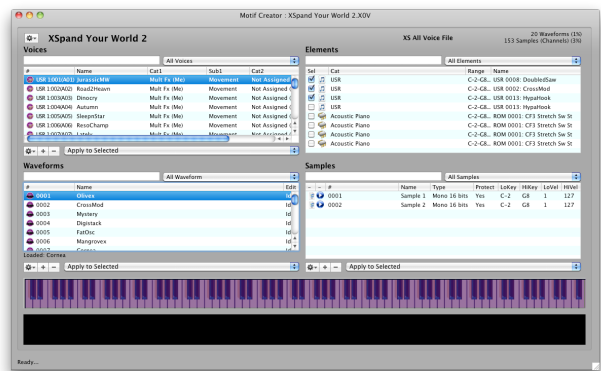
You can view the Multisamples, and view the Samples referenced by them. And you can assign Multisamples to Tones very easily, since the lists are fight next to each other.



## Four Corners

This includes from right to left: Patch-Tones, the below that left to right Multisample-Samples.

This performs the same purposes of Full View, except that it values the details of each view (you can see more of the columns) because of 2x2 alignment. Full view is more valuable when you want to see more entries of one list.





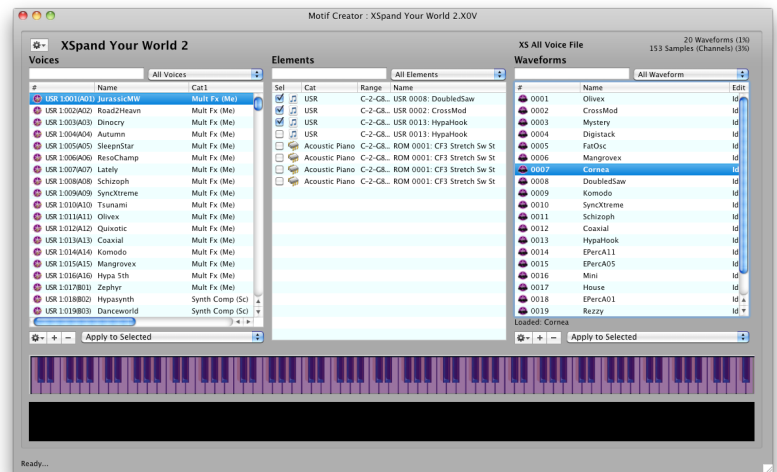
There are two Detailed Views:

### Patch-Tone-Multisample View

This includes from right to left: Patch, Tones, Multisamples.

This is when you are most concerned with assign already-designed Multisamples to Tones. The Samples list is omitted since you are already comfortable with the contents of the Multisamples.

You have more horizontal information since there are only 3 lists.

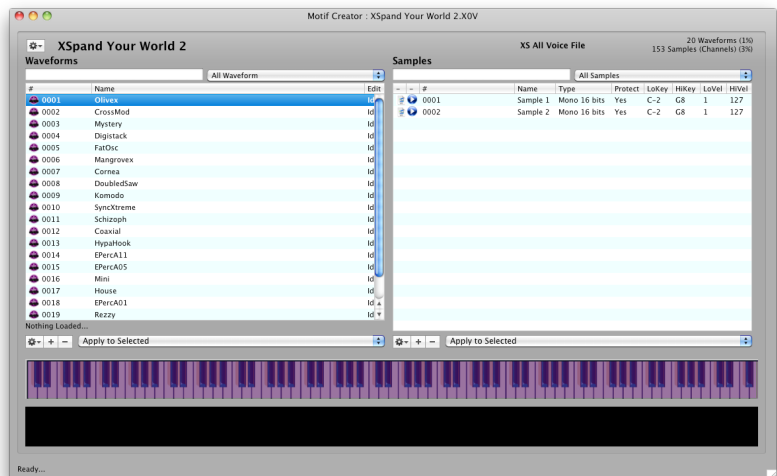


### Multisample-Sample View

This includes from right to left: Tones and Samples

This is for hardcore Multisample designing, you can see the minutiae of the Multisamples and of the Samples. You are not concerned with Patches or anything other than the Multisamples and Samples.

You have much more horizontal information since there are only 2 lists.

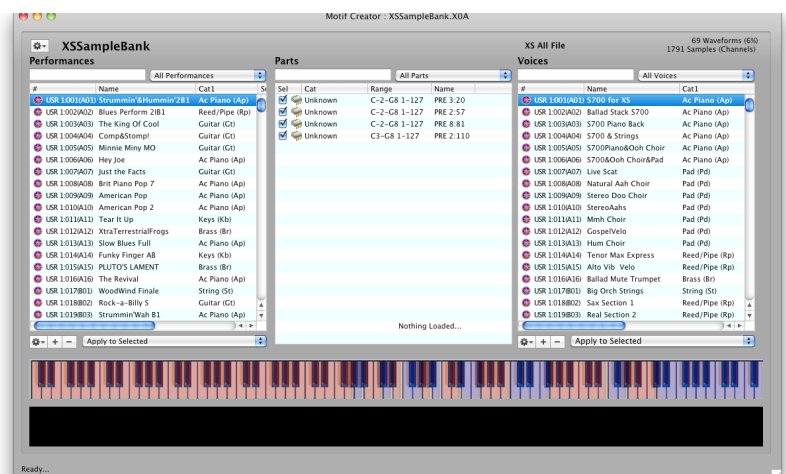


Finally, there is one Special View:

### Performance View

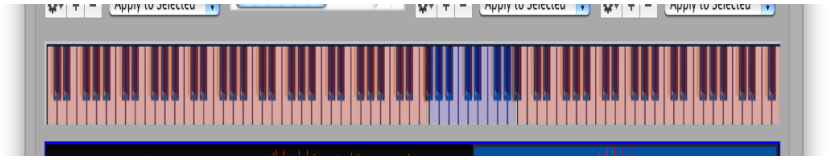
This includes from right to left: Performances, Parts, and Patches.

This is the Performance Editor, where you can assign Patches to Parts, and thus develop your own Performances easily. Performances do not exist on any other list, since Patches are more commonly used and Performances are "far away" from Multisamples and their dealings.



## The Keyboard Optional Display

Since the Fantom is basically a keyboard, and everything revolves around a keyboard, so it's just natural that we put a keyboard display on a Fantom document. It shows you what the contents of the current Multisample are, allows you to select a Sample within the Multisample, and also allows dropping to import Samples into the currently selected Multisample and determine their Key Ranges.



### Sample View

The Keyboard display shows in alternating pink and green the Samples that are referenced in the currently selected Multisample (on the Multisamples List). Velocities are also shown, in various tints.

### Sample Select

By clicking on the Keyboard display, this selects the Sample according to where you clicked. This also pertains to Velocity -the higher up you click, the higher velocity gets selected.

### Sample Import

By dragging and dropping external Samples (WAVE and AIFF) onto the Keyboard display, this allows you to import Samples into the currently selected Multisample. If you drag more than one Sample or a Folder, multiple overlays will appear as you drag onto top of the display, with a maximum of an octave spread. Dragging higher on the Keyboard makes for wider spreads.

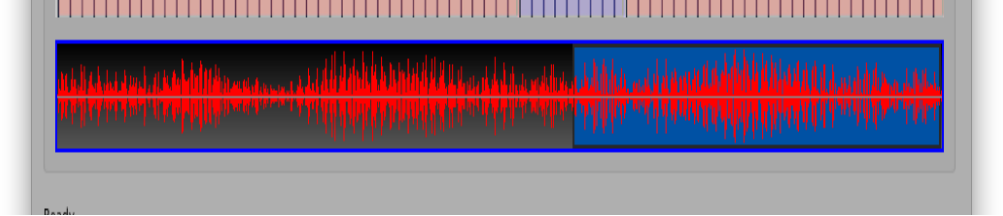
Dropping on the Keyboard display imports the Samples into the currently selected Multisample. If there are overlapping Samples, they are deleted or cut-away - this is because Multisamples do not allow overlapping.

## The Wave Optional Display

No editor would be complete without a Wave Display!

Although there is one in the proper place in the Sample Editor, you can display one on the main screen by checking the Wave Display menu in the top-level View menu, or the master Gear Menu.

This displays what you play in the Sample list. There are no transport controls; well, there actually is - the single button on the Sample List performs this function.



## Adding Objects

You add Patches, Multisamples, Samples, or Performances by dragging objects into the Lists, by clicking the + button under the List, or pressing the Insert button (INS) on the computer keyboard.

### Patch List

Drop a Patch from another Fantom document into this list, and it will add it to the Patch List. (We should say it will **replace** the Patch selected.) Or drop an external file, like a Kontakt .nki, Apple .exs, SoundFont, etc., or even one or more WAVE/AIFF files, on the Patch List and it will create a Patch and make Multisamples that will hold the samples. Clicking the + button or pressing INS will allow you to select one or more external Instruments to Import in (See Importing External Instruments for more information.)

### Multisample List

Drop a Multisample from another Fantom document into this list, and it will add it. Or drop an external file, like a Kontakt .nki, Apple .exs, SoundFont, etc., or even one or more WAVE/AIFF files, on the Multisample List and it will create Multisamples that will hold the samples. (You then have to assign the Multisamples to Tones within Patches, if you wish.) Clicking the + button or pressing INS creates a blank Multisample, in which you can add Samples to.

### Sample List

Drop a Sample from another Fantom document into this list, and it will add it. Or drop a WAVE/ AIFF. When importing external samples, Fantom Creator assigns the first available key from the left of the keyboard and gives it a one note range. You can edit the range afterwards. Clicking the + button or pressing INS brings up a Open dialog where you can select WAVE/AIFF files to import.

You can also add Samples by dropping them on the Keyboard Display at the bottom of a Fantom document. This provides an easy way to add a sample to a specific keyrange. For more information, see the Keyboard Optional Display in this document.

### Performance List

Drop a Performance from another Fantom document into this list, and it will add it to the Performance List. (We should say it will **replace** the Performance selected.) Note: you cannot import external foreign formats into the Performances List yet, even if the format is a Performance-type (like a Roland Performance). This will be incorporated in a future version.

## Deleting Objects

You delete objects in a List by clicking the minus sign (-) button under the List, selecting the "Delete" Gear, Ctl/Right-click Context, or top-level menu option, or by pressing the Delete button (DEL) on the computer keyboard.

The popup menus under the lists determine if you are deleting all the objects or just the selected ones.

Since it is impossible to delete a Patch or Performance, in this context it means Initializing the Patch(es).

## **Editing Objects**

You edit an object by double-clicking the object in the list, or by selecting the Gear or top-level menu "Edit...". It is only possible to edit one object at a time, so if there are multiple objects selected in a List, only the first selection will be edited.

When you edit, the appropriate editor appears. For more information on Editors, see the Editors section of this document.

For Samples, there is also an additional "Edit External..." menu option. This allows you to edit the sample in an external editor that you specify in the Preferences dialog. For more information, please see the Editing External Samples section in this document.

## Renaming Objects

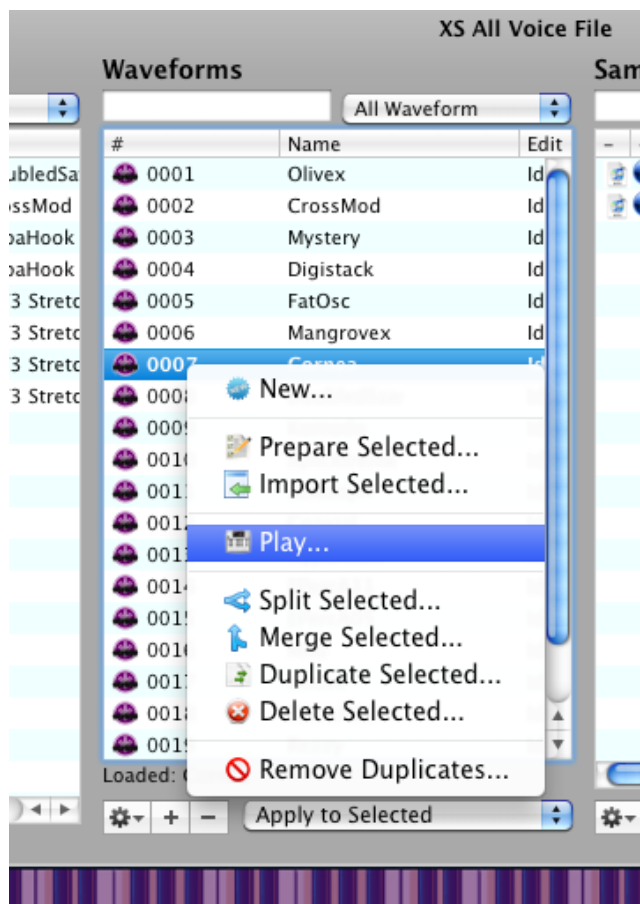
You can rename any object a Patch, a Performance, a Multisample, or a Sample - by selecting it, then selecting it again. Although you can name any object whatever you want, **Fantom Creator** will apply the natural Fantom text and length restrictions.

## The Fantom Player

Fantom Creator includes a Fantom Player, which can play from Fantom Creator itself a Fantom Document's Multisamples.

Simply select a Multisample in the Multisample list, right-click and select Play... (Or click the Multisample Gear menu and click play... The Multisample will load and you can play it on your MIDI keyboard. Make sure to select the correct MIDI In port in Preferences - Audio/MIDI.

**IMPORTANT!** On Windows the player is fixed to play out the ASIO type of driver and goes through ASIO4ALL. You can download this driver at [www.asio4all.com](http://www.asio4all.com). On Mac the output is fixed to Built-In Output.





# Preparing and Editing Multisamples/Tones Externally

One of the most powerful and innovative features in **Fantom Creator™** is the ability to drag (or select via menu) an Tone, Multisample, or Sample outside of **Fantom Creator™** and load it into a software sampler like Kontakt or a sample editor such as Sound Forge or PEAK. This effectively gives **Fantom Creator™** a full-fledged real-time editing engine! Simply edit your object (Tone, Multisample, or Sample), save it, and focus back to **Fantom Creator™** - it will then reference the new information, so when you eventually the save the document, those new changes will write into the new Fantom file.

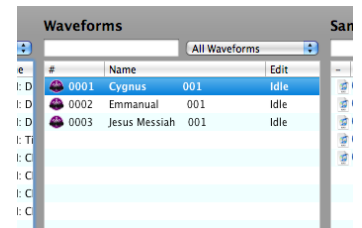
So, what is "preparing"? Kontakt (or any other sampler or editing program) has no idea what a Fantom Multisample or Sample is, so if you dragged that object into it (or tried to load it), it would reject it. "Preparing" is the act of writing behind the scenes temporary files that will be provided to the editing app. After you've "prepared" the Tone/Multisample/Sample, the List is display it as "prepared", and then your drag to the destination app will be successful.

Future versions of **Fantom Creator™** will allow you to automatically prepare every object; however, this is something you may not want to do because it may take a lot of time to perform, and chances are you won't be editing every Multisample. That is why it is implemented as a manual process. You can prepared several or all objects at once though, just use the top- level or Gear menus.

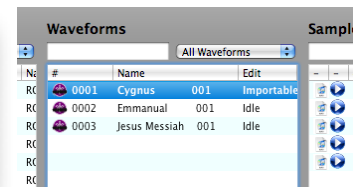
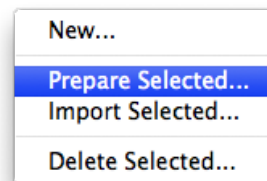
*(Note: Currently Kontakt 4.2 and Kontakt 5 are supported formats, however, they do not support modulators, filters, or effects.)*

## Preparing, Editing, and Re-importing Multisamples - An Example

First, locate the Multisample you want to edit or audition and select it in the Multisample List. Under Edit Status it says it's Idle; this means it's not prepared.



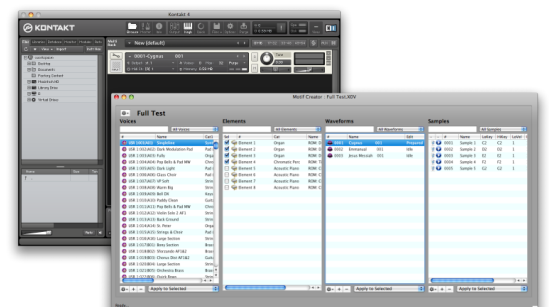
Click the Gear menu below and select Prepare Selected. **Fantom Creator** will then prepare the Multisample. You will know when it's done when the Edit Status column shows Prepared.



For the purposes of this example we will assume you have Kontakt, Native Instruments super-sampler. Open it up. Then drag the prepared Multisample out of the List and onto the Kontakt rack. The Multisample loads right into Kontakt!

Now, make some edits, add some samples, whatever. Save the Kontakt Instrument.

Now, go back to **Fantom Creator™**. The program will check to see if the prepared file has been updated; since it has, it updates the display and notes that it has been Imported. See the Edit Status column now; it says Imported. You have edited a Fantom Multisample using **Fantom Creator™**!



## Preparing/Editing Multisamples

If you'd like to use another sampler besides Kontakt to audition or edit your Multisamples, you have to load the files manually. As of this writing, Kontakt is the only sampler that fully supports dragging into the interface. The file to load is in the AppData section of Fantom Creator:

### Mac:

*/Users/[you]/Application Support/Chicken Systems/Fantom Creator*

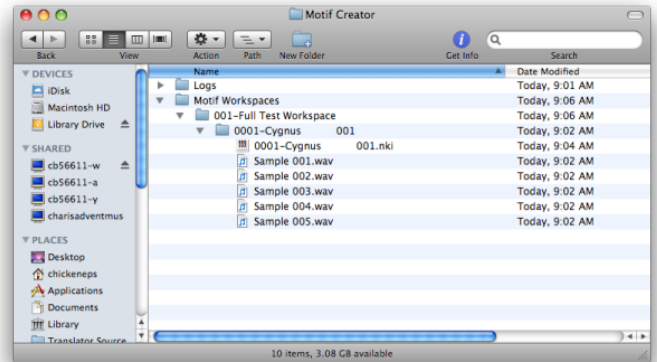
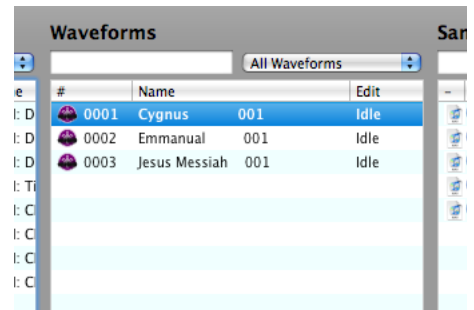
### Windows XP:

*C:\Documents and Settings\[you]\ ApplicationData\Chicken Systems\Fantom Creator* This assumes C: is your boot drive; also, ApplicationData may be a hidden folder

### Windows 7/Windows Vista: *C:\Users\[you]\*

*AppData\Roaming\Chicken Systems\Fantom Creator*  
This assumes C: is your boot drive; also, AppData may be a hidden folder

## Fantom Creator™



## Editing Single Samples Externally

**Fantom Creator™** can edit whole Multisamples (that is, keymaps) or single Samples on the Sample List. **Fantom Creator™** is a powerful program, but perhaps it's greatest power is the compatibility with other Patches.

Instead of providing it's own battery of sample editing DSP functions like other Patches do, **Fantom Creator™** instead provides the ability to edit the referenced samples within a Multisample with any external sample editor you have installed on your system. These can be free editors such as Audacity, or powerful commercial ones like SoundForge, WaveLab, Peak, DSP-Quattro, or many others.

First you select your External Sample Editor in Preferences (see the screen shot on the right). Then, select your sample (or samples) in the Sample List, and either right-click or use the Gear menu and click on Edit Selected Samples. **Fantom Creator™** will then transparently transfer the samples to a temporary location and open up the sample editor and that will open up the samples. Edit the samples at your leisure, and make sure to save them! Once you put the focus back to the **Fantom Creator™** application, **Fantom Creator™** will again references those new samples. Then, when you save your Fantom file, those edits will be included in your Fantom file.

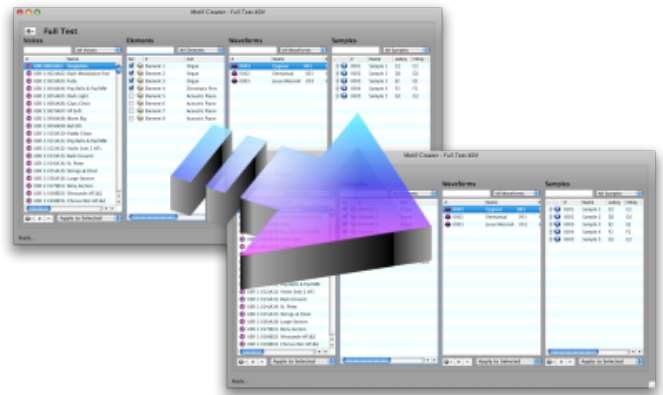
This is extremely powerful for mass editing of samples, it can't get easier then this!

## Exchanging Objects

When you have multiple Fantom documents open, you can exchange information by dragging objects (Patches, Tones, Multisamples, Samples, Performances, or Parts) from and to one another. You can multi-select objects and move them to another document.

For Patches and Tones, any user Multisamples that are connected are carried along with them. Also, with Patches and Tones, since there are a fixed set amount of them, they replace what you drop them on.

For Performances and Parts, any Patches (and their User Multisamples that are connected) are carried along with them. Also, with Performances and Parts, since there are a fixed set amount of them, they replace what you drop them on.



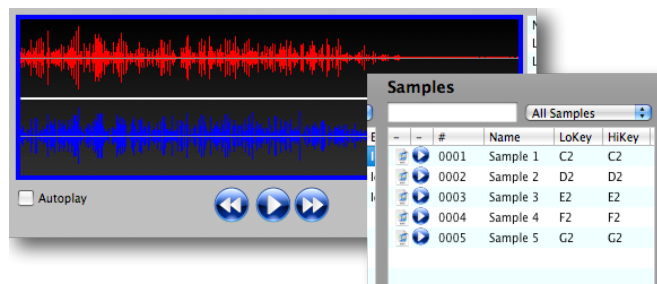
## Auditioning Samples and Other Objects

**Fantom Creator™** allows you to audition both the individual samples of your Multisamples, but also your Multisamples themselves.

### Samples

Click on the Play icon on the Sample you wish to audition on the Sample List. The Wave display shows in the Wave Display below if you have it shown.

Or, open the Sample Editor on an item on the Sample List, and click on the Play button on the Wave Display. You can adjust your sound outputs etc, in Preferences-Audio/MIDI tab.



### Multisamples

To audition a Multisample, you can either use the included Fantom Player; or you can Prepare the Multisample.

The Fantom Player is much easier to use, see the Fantom Player section in this document for more information.

To use Preparation to be played back on an external software sampler, such as Kontakt to EXS24. (For more information on Preparation, please see the Preparation section in this document.) After the Multisample is prepared, drag it onto or load it into the software sampler, and play it back. You also may edit it and import it back into the Fantom document.

## Importing External Instruments

**Fantom Creator™** contains the powerful **Chicken Systems Conversion Engine**, which powers our ubiquitous **Translator™** program and other products. This enables you to import already-formed Bank or Instrument files, such as SoundFonts, Kontakt Instruments, EXS24 Instruments, GigaStudio files, and much more.

When you import an external Instrument, it adds Patches and Multisamples to their respective Lists. This is done by dragging or select via menu; for instance, if you drag in a Kontakt .nki and drop it on the Patch List, it will convert the Kontakt file and add a Program to the first "blank" (that is, initialized) Patch, and add the converted Multisamples to the Multisample List. Importing Banks simply creates one or more Patches to the Patch List.

Remember that any importing is temporary until you save your Fantom Document; importing does not write to the representative file automatically.

**Fantom Creator™** supports just about any professional Instrument format that is available.

However, instruments off proprietary disks are not supported, and Instruments that come from exclusive protected libraries are not supported either. Reason Refills and HALion 3 files are not supported (they are encrypted just like protected libraries are, for some reason). Below is list of formats as of this writing we DON'T support for one reason or another. It is unlikely that any of the formats below will be incorporated in Fantom Creator because usually these files are encrypted for copy-protection reasons.

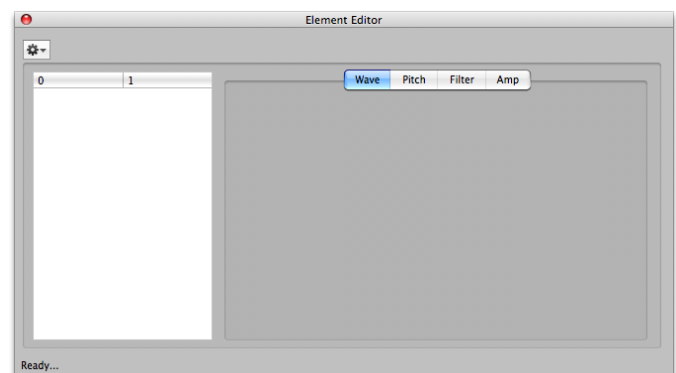
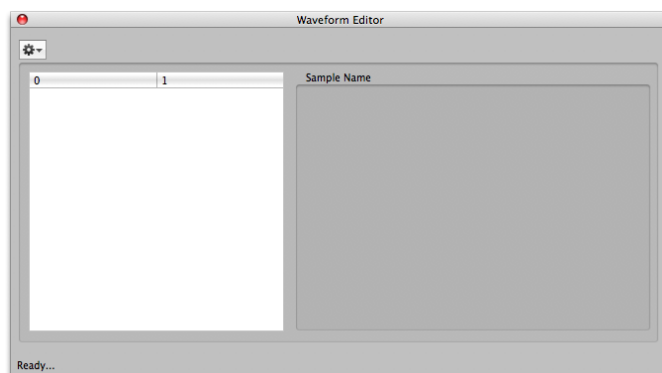
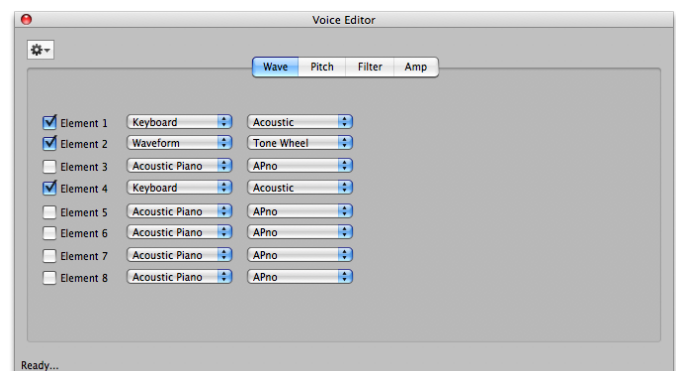
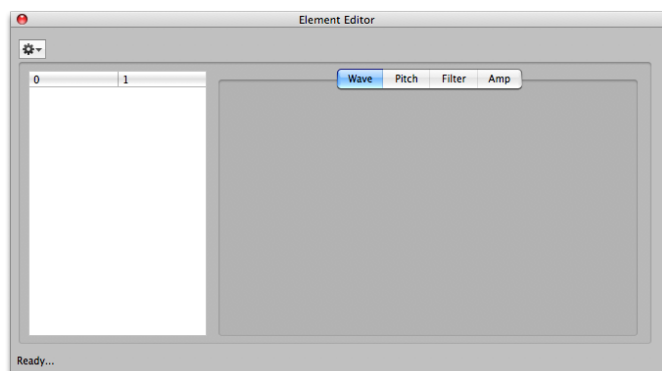
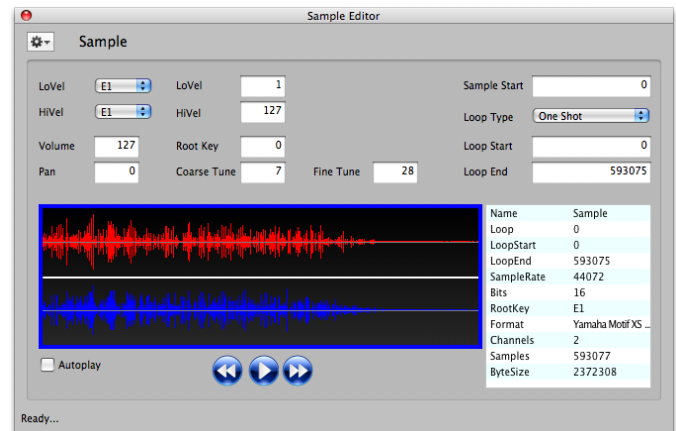
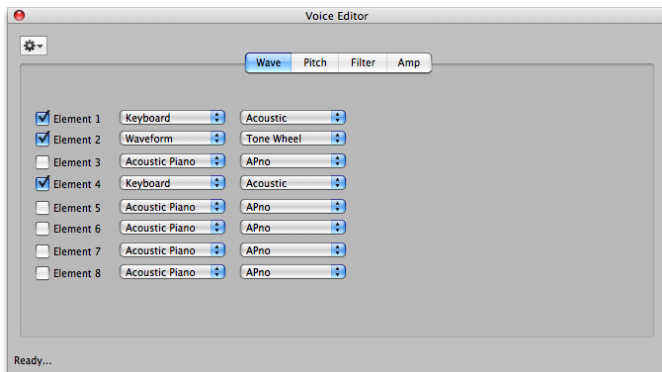
- Kontakt Player 1 and 2 libraries (that use samples within .nks or .nkx files)
- Structure Factory libraries (the ones that come off the 32+GB library, using ".big" files)
- SampleTank files that use "2-pak" compression
- Alesis Fusion files that use their own compression scheme (that is, many Hollow Sun libraries)
- ALL Steinberg HALion 3 and 4 files (Steinberg encrypts ALL files created with HALion (!))
- Propellerhead Refills; any files in one, or a referenced file in a Refill
- EastWest PLAY files (encrypted)
- Garritan-distributed Aria (.sfz files with .audio files as the samples)
- Stylus RMX Core Library-type files (includes XPanders)
- Vienna Instruments (not the original .gig/exs/nki files, but the new Vienna Instruments player)
- ALL Yellow Tools Independence files
- Yamaha Fantom factory banks that have the samples marked as "protected", and ones that use the LPC or XPC compression; these are few though
- Roland VP-9000

## Editors

In large part you'll do much of your adding/editing/deleting using the Main Screen. But when you need to view or tweak a certain parameter within a Fantom object, that's where the Editors come in.

You invoke an Editor by double-clicking on an object, or by using the Gear, Ctl/Right-click Context, or top-level menu. Hint: don't double-click on the Name, it just sets the Name up for editing. Double-click to the left or right of the Name.

There are six Editors: Patch, Tone, Multisample, Sample, Performance, and Part.



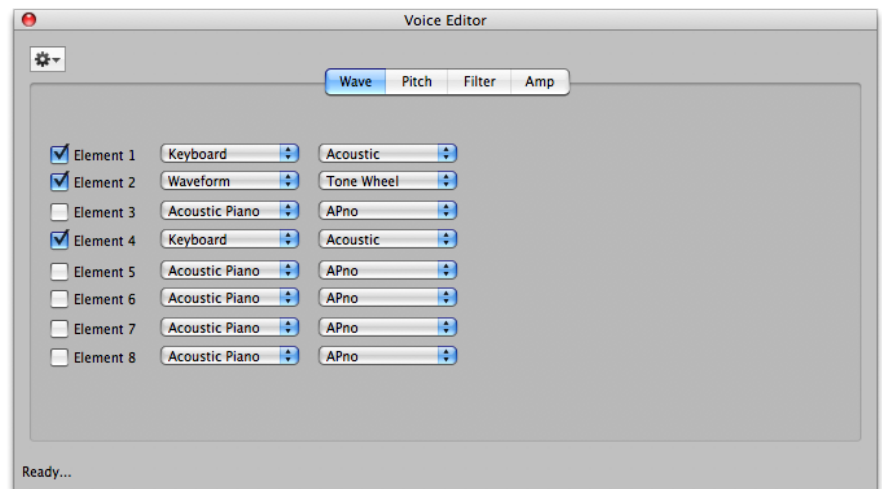
## Patch Editor

This exposes some of the Patch-level parameters (there aren't too many), and the Multisample assignments to the Tones. You can change the Tone assignments much like you do on the Main Screen.

To change the Tone parameters, you will need to use the Tone Editor, which you can invoke from the Program Editor.

Please note that until you close the dialog, none of the changes you make are permanent. If you make changes, and try to close the dialog, it will ask you if you want to save your changes. (This can be turned off in Preferences-General.) Also remember that even if you "save" those changes, your Fantom Document still can be reverted to its original state.

There are knob widgets to control most of the parameters, and Range Maps to control the Key and Velocity Ranges of the Tones.



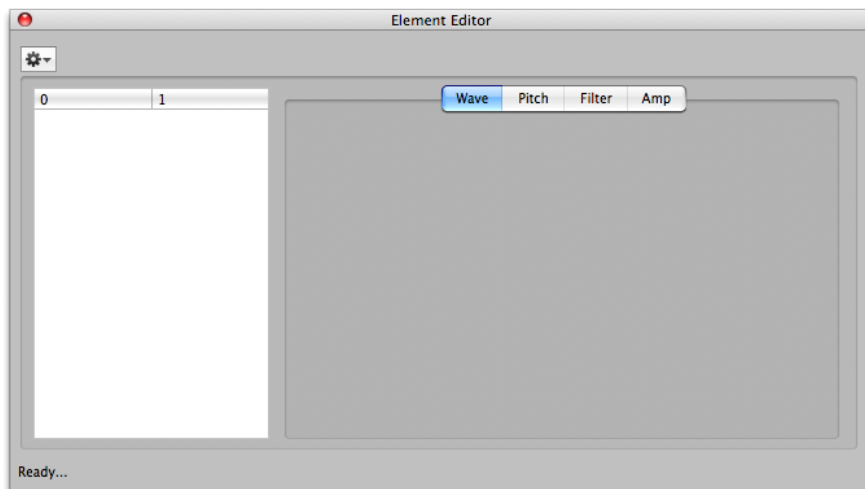


## Tone Editor

This exposes the Multisample assignment for that Tone and all the Tone-level parameters. The Tone parameters on the Fantom are usually the most significant. You can change the Tone's assignment and edit any of the parameters.

Please note that until you close the dialog, none of the changes you make are permanent. If you make changes, and try to close the dialog, it will ask you if you want to save your changes. (This can be turned off in Preferences-General.) Also remember that even if you "save" those changes, your Fantom Document still can be reverted to its original state.

There are knob widgets to control most of the common parameters. There are also graphical envelope widgets to customize the envelopes.



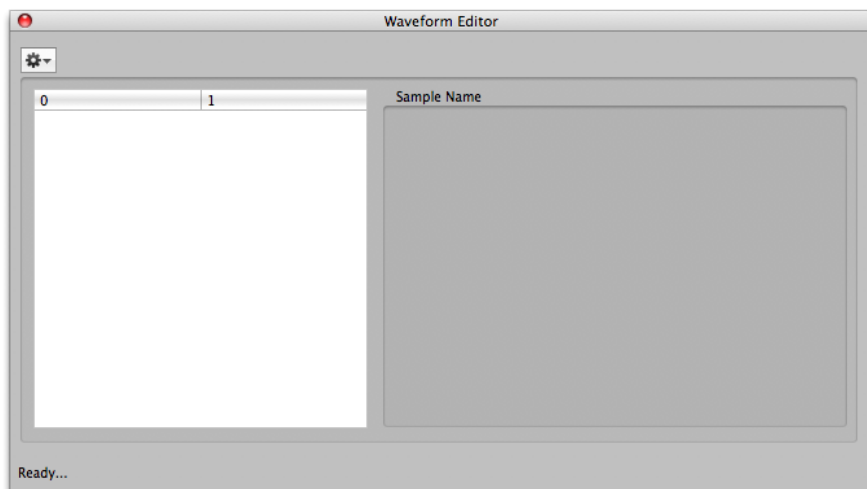
## Multisample Editor

The Multisample Editor shows all the Samples assigned to the Multisample and performs much like the Multisample List on the Main Screen.

You can “prepare” a Multisample here and edit externally (see the External Editing topic in this document).

Additionally, you can also invoke the Sample Editor for a specific Sample in the Multisample from this Editor.

Please note that until you close the dialog, none of the changes you make are permanent. If you make changes, and try to close the dialog, it will ask you if you want to save your changes. (This can be turned off in Preferences-General.) Also remember that even if you “save” those changes, your Fantom Document still can be reverted to its original state.

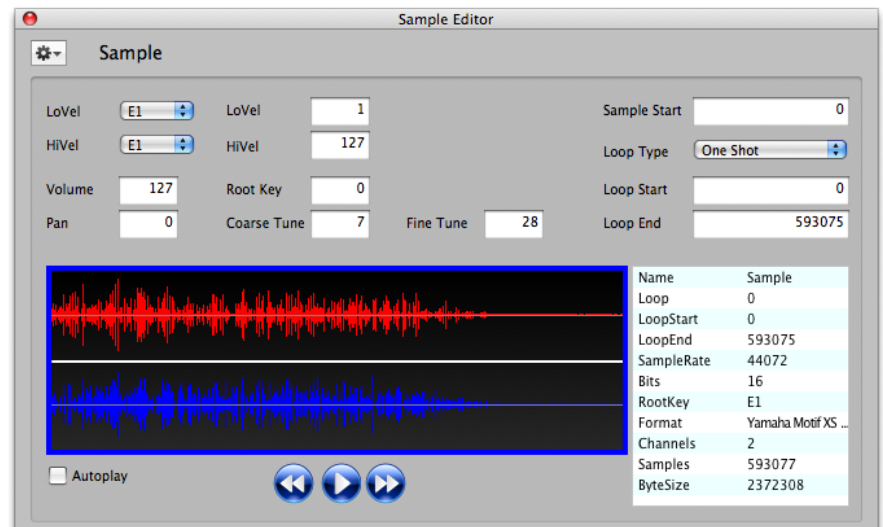


## Sample Editor

This shows the sample-specific parameters (Tune, Pan, Volume, Ranges, Start/Loop points, etc.) and shows the full Multisample display, where you can audition the sample.

You can edit the KeyRange and Velocity Range parameters here. Please remember that in a Fantom Multisample there can not be overlapping ranges, even though this editor will allow you to do so. If there are overlapping samples when you save the Fantom file, it will warn you and give you the option to Cancel and repair the overlaps (then resave), or it will automatically repair the overlaps. However, keep in mind that it may make decisions you do not want.

You can “prepare” a Sample here for external editing (see the External Editing topic in this document). You can replace the sample with another one, plus you can edit the sample using an external sample editor. A small but helpful complement of DSP functions is also included.



Please note that until you close the dialog, none of the changes you make are permanent. If you make changes, and try to close the dialog, it will ask you if you want to save your changes. (This can be turned off in Preferences-General.) Also remember that even if you “save” those changes, your Fantom Document still can be reverted to its original state.

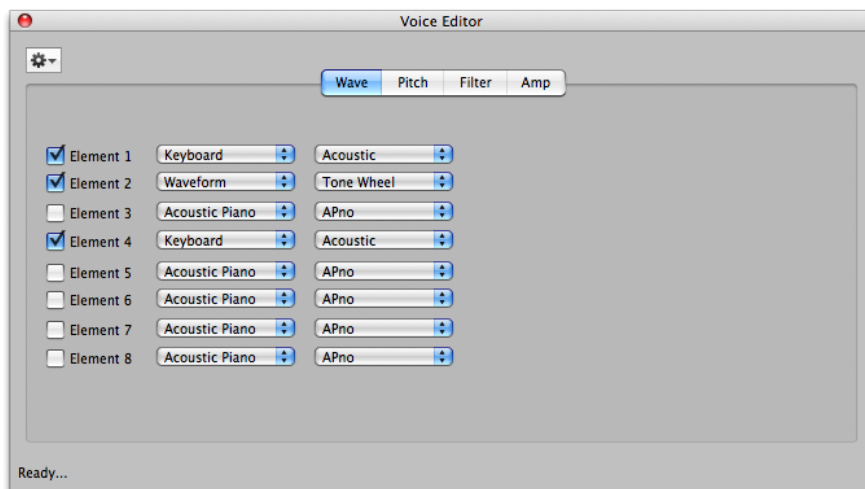
There are knob widgets to control most of the parameters, and Range Maps to control the Key and Velocity Ranges.

## Performance Editor

The Performance Editor shows all the Parts contained in the Performance, plus some of the Common parameters.

Please note that until you close the dialog, none of the changes you make are permanent. If you make changes, and try to close the dialog, it will ask you if you want to save your changes. (This can be turned off in Preferences-General.) Also remember that even if you “save” those changes, your Fantom Document still can be reverted to its original state.

There are knob widgets to control most of the parameters.

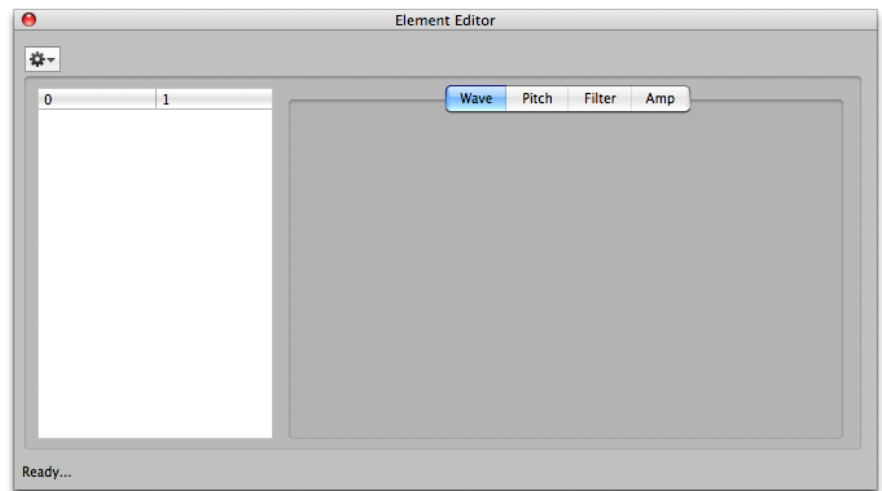


## Part Editor

The Part Editor shows all the Parts assigned to the selected Performance and performs much like the Part List on the Main Screen. You can “prepare” a Part here.

Please note that until you close the dialog, none of the changes you make are permanent. If you make changes, and try to close the dialog, it will ask you if you want to save your changes. (This can be turned off in Preferences-General.) Also remember that even if you “save” those changes, your Fantom Document still can be reverted to its original state.

There are knob widgets to control most of the common parameters.



# AutoSampler

**Fantom Creator™** has a spiffy plugin called **AutoSampler**. This automatically sends MIDI notes to internal and external sound sources and records them automatically, and then outputs the results into the current Fantom Document you have open.

To autosample an external or an internal device, follow the following steps:

Set your MIDI Out/Audio In devices appropriately. (Audio/MIDI page)

If you are sampling an internal device, open it and set the MIDI IN and Audio Out to the corresponding MIDI In MIDI Out and Audio In preferences set in AutoSampler. Of course, make sure the MIDI Channels are the same. If sampling an external device, make sure the proper audio cables are going into the port specified in AutoSampler.

Set your preferences concerning what notes you want sampled, how many velocities you want sampled, and what you want the result named. (Placement page)

Click Record, the tabs on AutoSampler shift to the Sampling... tab where the progress bars exist, and sit back and watch.

External MIDI and Audio devices are standard on Mac and Windows; the ports are embedded in the operating system, and if you are using external gear, you've already installed those drivers.

But virtual MIDI and Audio cables aren't standard in either the Mac or Windows, so you need to get some additional software if you record software instruments such as Kontakt, EXS24, MachFive, etc.

These are called Virtual Cables. Sometimes they are referred to a Ports, but we feel calling them Cables is more precise, since we are talking about connecting two devices at two ends. A Cable illustrates both "ends".

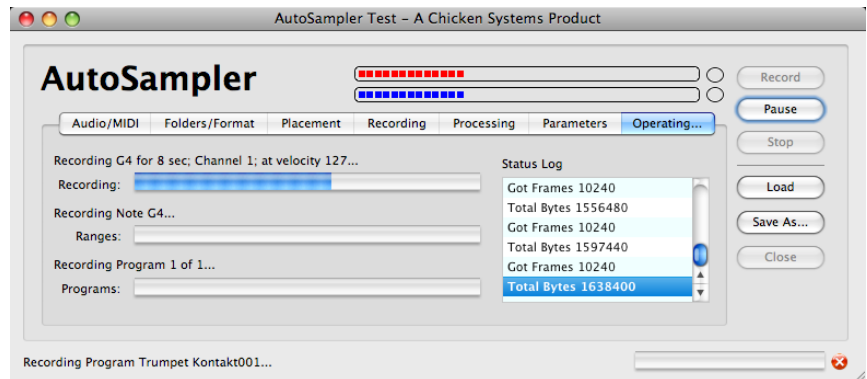
You need to establish a Virtual MIDI Cable, so you can send MIDI from Autosampler to the internal software application, plus set up a Virtual Audio Cable, so you can capture the internal device's audio.

NOTE: The following contains external links that may become bad over time. We will attempt to keep these up to date. If any of them fail, please ask us for the latest information.)

## Recording Internal Devices

**Mac Virtual MIDI:** Fortunately, OSX offers this natively, but you have to manually set it up. Open the Audio/MIDI Utility applet in your Mac's Utilities folder. Create a new virtual MIDI port; by default this is called "IDC Output A". After establishing this, it will then show up in the AutoSampler's MIDI Out list. You will also need to choose this in your internal device's MIDI In list.

**Mac Virtual Audio:** We recommend using Cycling74's free SoundFlower system (download it at Cycling74's web site). SoundFlower is a inter-application audio device. After you install it, a Audio In SoundFlower device will appear in Autosampler's Audio In list. Again, you will need to make sure that your internal device is outputting on SoundFlower's output port.



**Windows Virtual MIDI:** Windows doesn't provide this, but a free driver and app called loopMIDI by Tobias Erichsen supplies this. Download it and install it. Open the app, that's all you have to do. After establishing this, it will then show up in the Autosampler's MIDI Out list. You will also need to choose this in your internal device's MIDI In list.

**Windows Virtual Audio:** The one we use is VB-Audio Cable, which is free from VB-Audio Software (download it at VB-Audio Software's web site. After you install it, a "Virtual Audio Cable" device will appear in Autosampler's Audio In list. Again, you will need to make sure that your internal device is outputting on Virtual Audio Cable's output port.

## Templates

Once you have used Autosampler a couple times, you'll have some set note payouts and setups you'll want to save. You can do that in the Load/Save As... buttons to the right. Save As.. saves your current work, Load saves templates you've saved earlier. They are contained as .ast files in your Application Support folder:

### Mac

/Library/Application Support/Chicken Systems/[appname]/AutoSampler Templates

### Win8/7/Vista

%SYSTEMDRIVE%\Users\[username]\AppData\Roaming\Chicken Systems\[appname]\AutoSampler Templates

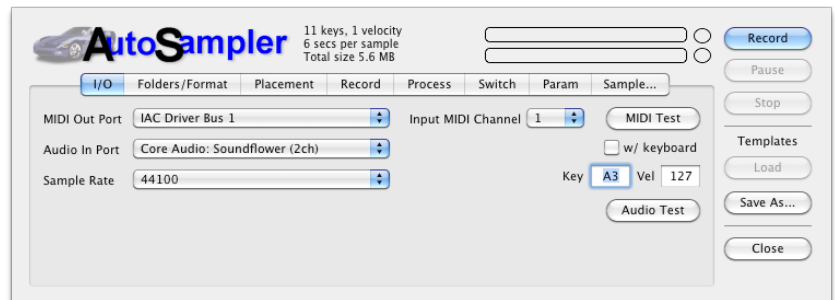
### Windows XP

%SYSTEMDRIVE%\Documents and Settings\[username]\Application Data\Chicken Systems\[appname]\AutoSampler Templates

## Audio/MIDI

Choose your MIDI Out port and your Audio In ports here. Set your output MIDI Channel here too. You can test the MIDI out with the MIDI Test button, and set the note and velocity using the selections below. Even better, check the w/keyboard check box and test using your MIDI keyboard.

You can also test incoming audio by pressing Audio Test, and looking at the meters above. You may not be able to hear the audio coming in, but this should be no worry.



## Placement

This is where you will select what MIDI notes will be recorded and how many and at what velocities. Simply choose the notes on the buttons; the MIDI keyboard graphic will show you what you have chosen.

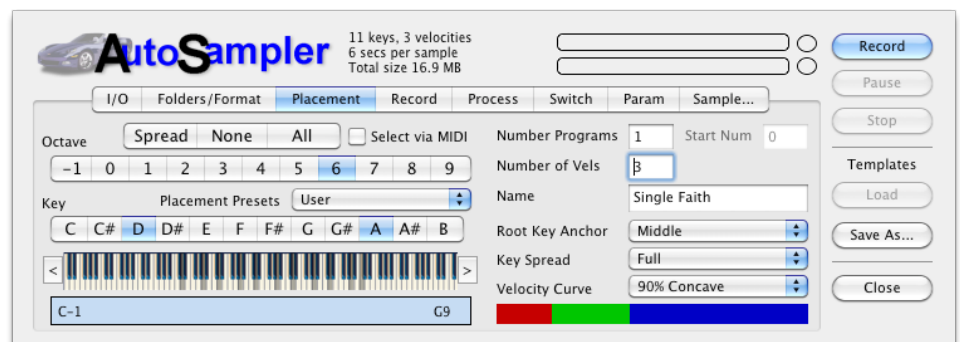
You can also select your notes via MIDI keyboard by checking the Select via MIDI checkbox.

We have supplied some handy Placement Presets. These are the most common placements, allowing for guitars and other common instruments. Note: the reason there is preference for sampling D's and A's is because harmonically these are much easier to loop.

There is also a KeyRange slider below the keyboard graphic; this limits the keyrange extends of the ultimate Patch that is created.

Normally, AutoSampler fills in all spaces between notes you choose not to record (except when KeySpread is "Single Key"), so this determines the limits of the extreme low and high ranges.

*Note: All velocity spaces are always filled in.*



The keyboard graphic has arrow buttons on both sides, allowing you to shift the placed notes up or down by an octave. By pressing CTL while clicking on the arrows, you shift down by a single note.

**Number of Patches:** This is the amount of Patches you will record. If >1, a Program Change is outputted, changing the Program that you are recording. Also, Start Number is enabled, allowing you to set the beginning Program Change number that will be sent.

**Start Number:** See above.

**Number of Velocities:** This the amount of velocities that you will record. See Velocity Curve below for the ranges this parameter enabled if >1.

**Root Key Anchor:** AutoSampler automatically sets keyranges to fill in all the notes that you aren't recording. This parameter determines how these are placed in respect to the note (Root Key) that you recorded. Middle means half the keyrange goes down and half goes up. LoKey means the record note is the lowest note of the range, whereas HiKey means the recorded note is the highest note of the range. Hint: although Middle is a good compromise, usually HiKey is a good selection because most audio sounds better transposed downward than upward; plus the slower playback gives it more time before a possible loop.

**Key Spread:** Most of the time you'll select Full, which means all areas between LoKey-HiKey are filled in. When set to Single Key, the keyranges are always 1 note in length and there is no filling in of notes not recorded.

**Velocity Curve:** This determines the velocity ranges if you are recording >1 velocities. Linear means that all ranges are equal in height. The Convex values mean that lower velocities are larger and higher velocities are smaller (meaning you have to hit harder to get the high velocity sounds), and the Concave values are the opposite; higher velocity sounds are more likely to be sounded. Note: to be specific, the velocities that are actually record are always the HIGHEST velocity determined by the curve. This is because everyone wants to hear the velocity=127 sound, but no one wants to hear the Velocity=1 sound, mostly.

The Velocity graphic on the bottom shows you at a glance what velocities you have programmed. This reflects the Velocity Curve set.

## Recording

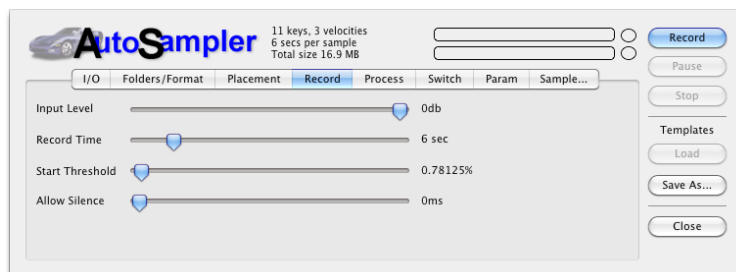
These are the parameters exclusively dealing with recording.

**Input Level:** This is the input level of the audio. Generally you will want to leave this at 0db and adjust whatever is incoming with it's own controls.

**Recording Time:** This is the amount of time recorded. Please remember that any silence BEFORE or AFTER the sound is automatically trimmed, so the final result maybe not be this amount of time.

**Start Threshold:** This is the level of audio required for the recording to actually commence saving of the recorded audio.

**Allow Silence:** Sometimes you want to record the extra silence after the sound has died away. This can be handy for noise reduction processing you do later.

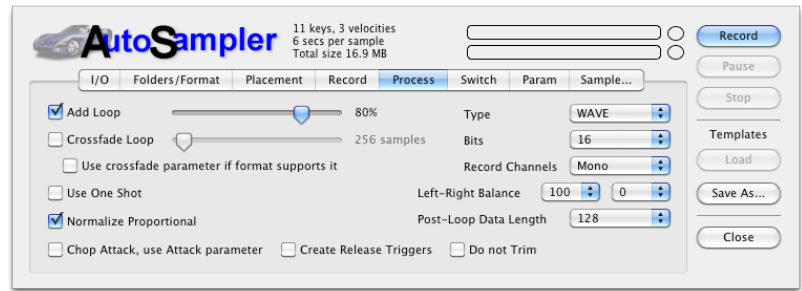




## Processing

Once the audio is recorded, there are a couple things that you might want to do with it. You will likely want to loop it and probably normalize it.

**Add Loop:** This turns on the loop in the destination format. The slider sets the approximate loop start area you want to set. Note: This is approximate; if you choose to loop, the engine will make some decisions about the best place to loop BASED ON this parameter.



**CrossFade Loop:** (Only available when AddLoop is checked.) This hardcodes a crossfade loop into the recorded sample. The slider determines the length of the crossfade; we recommend values around 4000 samples.

**Proportional Normalize:** This boosts all samples up to 0db level at highest, with one twist: it takes the highest level in ALL the recorded samples, and normalizes all the samples regarding that level. This way, the balance of levels is preserved.

**Chop and Add Parameter Attack:** Sometimes the data that is under a relatively slow attack is the same as the sustained portion. Checking this tells AutoSampler to truncate all data up to the highest level (before the loop start if there is one), calculate the time it took to get there, and writes the AmpEnv Attack parameter accordingly.

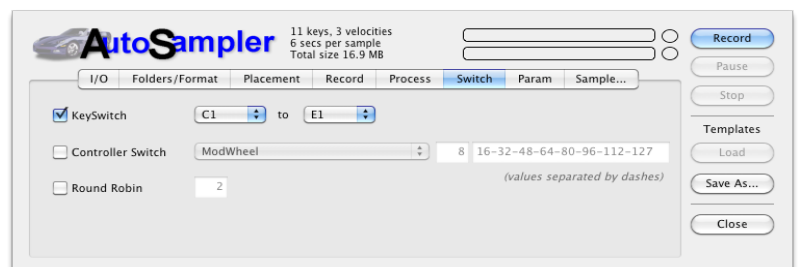
**Create Release Triggers:** If checked, AutoSampler will make separate samples of when it releases the key, and the output format will program and use these samples accordingly, plus set the release parameter to around 150-300ms. Note: if the output format does not support release triggers, AutoSampler will not create these samples, effectively ignoring this parameter.

**Do Not Trim:** This disables the automatic trimming AutoSampler does post-recording. Again, this is often used in conjunction with the Allow Silence parameter, where you want the silence after the sound to use for your manual post-processing.

**Record Channels:** This determines the output format of the samples, either Stereo or Mono.

## Switches

This handy features allows you to sample Instruments that play different sounds based on Keyswitching, or Controller switching, or Round Robin. You likely know some advance information on where keyswitches are located or what controller switches things.



For Controller switching, the values sent before recording are listed in the middle right box. You can edit them, but make sure there is one value per number of controllers you have selected.

Since the Fantom does not support any kind of switching, each Keyswitch or Controller switch will appear as a separate Patch.

## Parameters

AutoSampler gives you a selection of default parameters that will be written into your output format. This is handy for including modulators like pitch bend or LFO->ModWheel->LFO, or just the simple task of turning on the filter so you don't have to..

## Menus - File

### New

Creates a new Fantom Document. You have the choice of Fantom-S, Fantom-X, or Fantom-G.

### Open

Displays a common Open dialog where you can open an existing Fantom PCG file. This will be displayed in a new Fantom Document.

### Open Recent

A list of previously selected Fantom Documents.

### Revert to Saved...

Reverts the current Fantom Document to the original saved version it references. If the current state of the document is Edited, Fantom Creator will ask you if you want to save your changes elsewhere.

### Close Window

Closes the current Fantom Document. If the current state of the document is Edited, Fantom Creator will ask you if you want to save your changes.

### Import...

Allows you to select a non-Fantom format to import into Fantom Creator and create a new Fantom Document from it. This uses the famous Chicken Systems Conversion Engine™ to accomplish the importing.

### Export Program List Text

Saves a Text file listing the contents of the Fantom Document. See Preferences - Import for different options how this list is formatted.

### Export All Samples

This exports all the samples in a Fantom Document to WAVE, AIFF, CAF, or SND sound files.

### Save

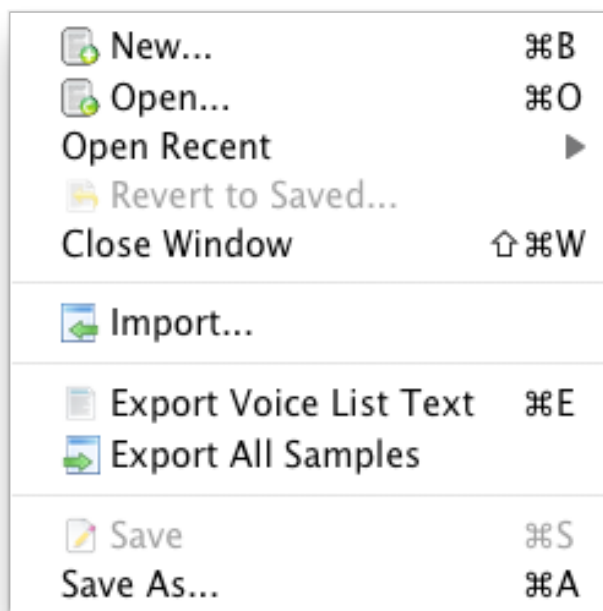
Saves the current Fantom Document, overwriting any previous information. Currently you cannot save into another Fantom type; although this will be possible in a upcoming version.

### Save As...

Saves the current Fantom Document, allowing you to name it and write it anywhere. Currently you cannot save into another Fantom type; although this will be possible in a upcoming version.

### Quit/Exit

Quits the whole mess.



## Menus - Patch/Performance

These Functions are also accessible via the Function Buttons on the Main Interface on the bottom of the Main Screen. The menu is the same for Patches or Performances, they apply the same.

### Import

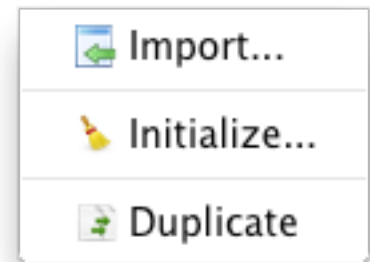
Allows you to import a non-Fantom file into the current Fantom Document. It will replace the first "blank" Fantom Program or Performance (starting with the text "Init").

### Initialize Selected (or All)

Initializes the selected Patches, or all the Patches/ Performances in the Fantom Document. (Dependent on the setting of the PopupMenu under the Program or Performance List.)

### Duplicate

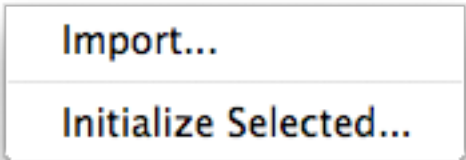
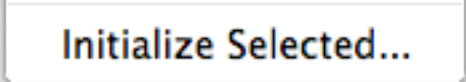
This duplicates the Program or Performances selected.



## **Menus - Tone/Part**

### **Import**

Allows you to import a non-Fantom file into the current Fantom Document as one or more Multisamples. It will create the Multisamples(s) and then assign them to the currently-select Tone (including the real-time parameters such as envelopes and filters). If more then one Multisample is created, it will assign them to any other "empty" Tones in that Program.

A rectangular button with a thin border and a subtle drop shadow. The text "Import..." is centered in a dark blue, sans-serif font.A rectangular button with a thin border and a subtle drop shadow. The text "Initialize Selected..." is centered in a dark blue, sans-serif font.

### **Initialize Selected (or All)**

Initializes the selected Patches, or all the Patches in the Fantom Document. (Dependent on the setting of the PopupMenu under the Program List.)

## Menus - Multisample

**New...**

Adds a new blank Multisample to the Fantom Document.

**Import...**

Allows importing of a non-Fantom Instrument into the current Fantom Document, only in the form of one or more Multisamples.

**Prepare Selected (or All)**

Prepares the selected Multisamples, or all the Multisamples in the Fantom Document. (Dependent on the setting of the PopupMenu under the Multisample List.)

**Import Selected (or All)**

Re-imports the already Prepared Multisamples, or all the Multisamples in the Fantom Document. (Dependent on the setting of the PopupMenu under the Multisample List.)

**Delete Selected (or All)**

Deletes the selected Multisamples, or all the Multisamples in the Fantom Document. (Dependent on the setting of the PopupMenu under the Multisample List.)

**Duplicate**

Duplicates the selected Multisamples in the Fantom Document.

**Merge...**

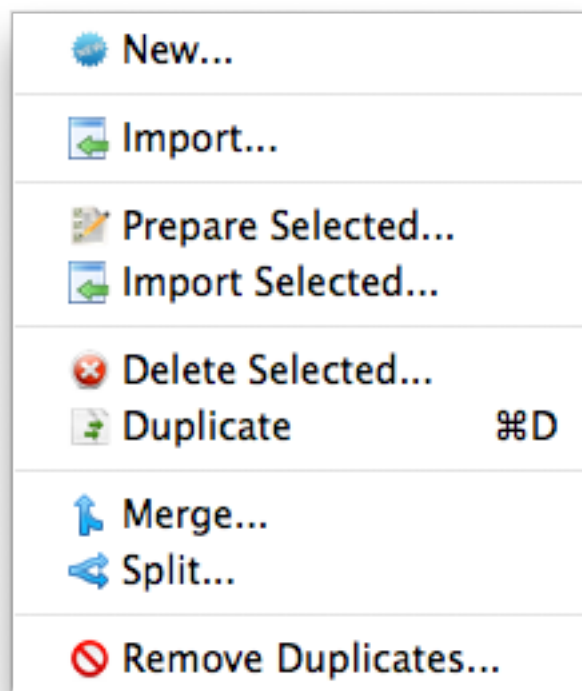
Merges the selected Multisamples in the Fantom Document.

**Spilt...**

Splits the selected Multisamples in the Fantom Document.

**Remove Duplicates**

Macro function that analyzes each Multisample and makes sure there are no duplicates. It also updates the references in the Tones of the Patches automatically.



## Menus - Sample

**Add->Folder**

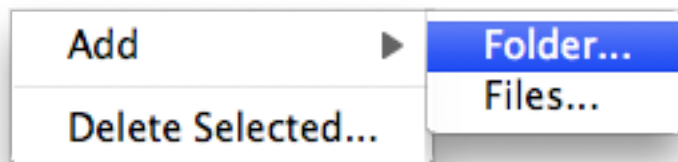
Allows adding a folder of sample files to the currently selected Multisample. Fantom Creator™ will include all sample files immediately within the Folder and within any sub-Folders.

**Add->Files**

Allows adding one or more sample files to the currently selected Multisample.

**Delete Selected (or All)**

Deletes the selected Samples, or all the Samples in the currently selected Multisample. (Dependent on the setting of the PopupMenu under the Sample List.)



# Menus - View

## Patch/Tone/Multisample View

This includes from left to right: Patch, Tones, Multisamples.

## Multisample/Sample View

This includes from left to right: Multisamples and Samples.

## Performance View (All Files only)

This includes from left to right: Performances, Parts, and Patches.

## Four Corners View

This includes from left to right: Patches-Tones, then below that, from left to right, Multisample- Samples.

## Full View

The standard 4-List view.

## Keyboard

Shows or Hides the Keyboard Display on the Fantom Document. Please note that it does not display in the Performance View.

## Wave Display

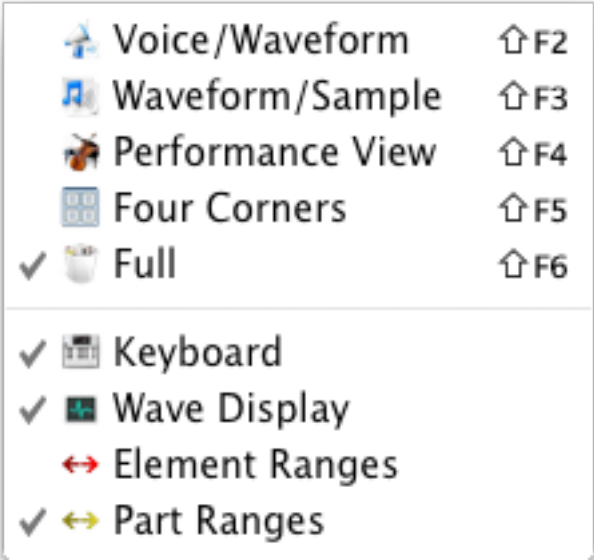
Shows or Hides the Wave Display on the Fantom Document. Please note that it only displays when the Sample List is visible.

## Tone Ranges

Shows the Tone Range widgets at the top of the Tone List.

## Part Ranges (All Files only)

Shows the Part Range widgets at the top of the Part List.



# Menus - Help

## Contents

Displays the Help File; that is the manual. Hey, READ IT!!! =)

## Troubleshooting

Goes to the Troubleshooting page in the Manual.

## Bug Reports

Goes online to the Chicken Systems Fantom Creator Bug Report page. You can fill out the form there and submit any applicable files, to report any issues Fantom Creator has.

## Sending Files

Displays the Help File section about sending files within Bug Reports.

## Fantom Creator Home Page

Goes online to the Chicken System's Fantom Creator Home page.

## Check For Updates

Contacts the Chicken Systems Update Server online and checks if there is a update for your current running version of Fantom Creator.

## Online Documentation

Goes online to a online version of the Help File. Usually the same thing as the Help File.

## Support - Forum

Goes online and takes you to the SamplerZone Fantom Creator forum. You can get questions answered here, as well as meet up with the most amazing people you'll ever want to meet.

## Support - Online Chat

Opens a online Chat window, where you can chat with a Chicken Systems engineer during business hours and sometimes outside of business hours.

## Support - Email

Allows you to directly send an email to Chicken Systems. All emails are replied to within 24-48 hours.

## Support - Movies

Goes to the Fantom Creator Product Video site for a full range of product videos and instruction.

## About Fantom Creator™

Shows the Fantom Creator™ Splash Screen, which shows you your registration information and the current version number you are using.

Contents	⌘ F1
Troubleshooting	
🐛 Bug Reports	⌘ F8
Sending Files	⌘ F9
🌐 Motif Creator Home Page	
🌐 Check For Updates	⌘ F7
🔗 Online Documentation	
📄 Support	▶
About Motif Creator	



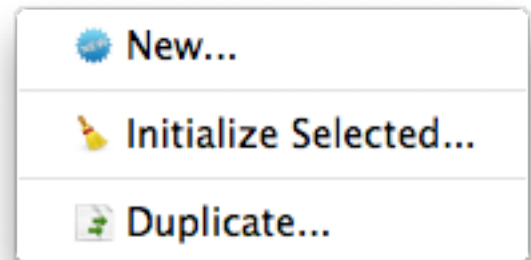
## Gear Menus - Patch

### Import

Allows you to import a non-Fantom file into the current Fantom Document. It will replace the first "blank" Fantom file (starting with the text "Init").

### Initialize Selected (or All)

Initializes the selected Patches, or all the Patches in the Fantom Document. (Dependent on the setting of the PopupMenu under the Patch List.)



## Gear Menus - Multisample

**New...**

Adds a new blank Multisample to the Fantom Document.

**Prepare Selected (or All)**

Prepares the selected Multisamples, or all the Multisamples in the Fantom Document. (Dependent on the setting of the PopupMenu under the Multisample List.)

**Import Selected (or All)**

Re-imports the already Prepared Multisamples, or all the Multisamples in the Fantom Document. (Dependent on the setting of the PopupMenu under the Multisample List.)

**Play...**

This loads the Multisample into the Fantom Player, so you can play the Multisample through MIDI.

**Split Selected... (or All)**

This splits the Multisample(s) in half, one getting the lower values, a new copy getting the top half, in the Fantom Document. (Dependent on the setting of the PopupMenu under the Multisample List.)

**Merge Selected (or All)**

Merges the selected Multisamples, or all the Multisamples in the Fantom Document. (Dependent on the setting of the PopupMenu under the Multisample List.)

**Duplicate Selected (or All)**

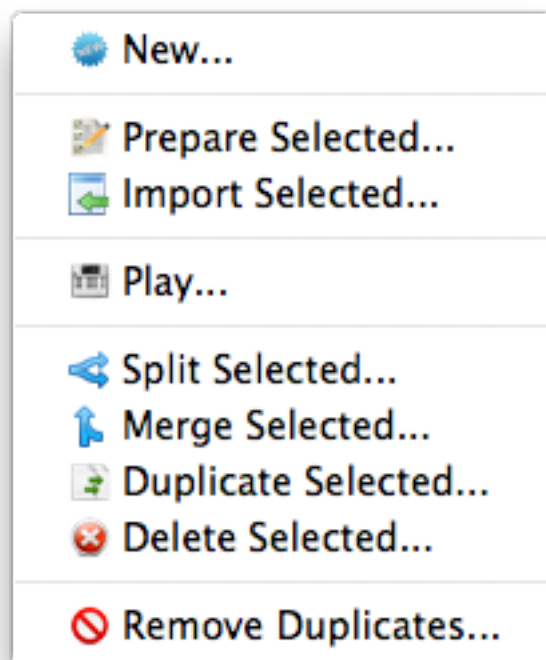
Duplicates the selected Multisamples, or all the Multisamples in the Fantom Document. (Dependent on the setting of the PopupMenu under the Multisample List.)

**Delete Selected (or All)**

Deletes the selected Multisamples, or all the Multisamples in the Fantom Document. (Dependent on the setting of the PopupMenu under the Multisample List.)

**Remove Duplicates**

Macro function that analyzes each Multisample and makes sure there are no duplicates. It also updates the references in the Tones of the Patches automatically.



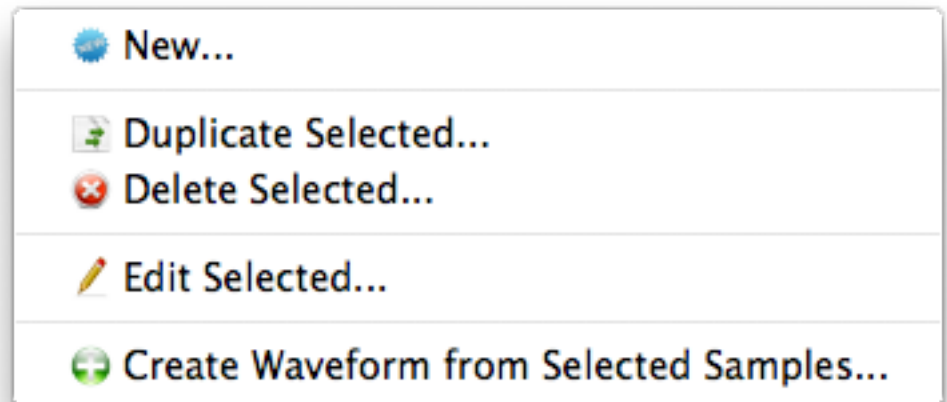
## Gear Menus - Sample

**New...**

Allows adding one or more sample files to the currently selected Multisample.

**Delete Selected (or All)**

Deletes the selected Samples, or all the Samples in the currently selected Multisample. (Dependent on the setting of the PopupMenu under the Sample List.)



## Preferences

The Preferences dialog is viewed by clicking on (Windows) Tools-Preferences top menu, or (Mac) App Menu-Preferences.

### General Tab

#### Prepare Audition Format

This is the format that is written when preparing a Multisample for auditioning.

#### New Import Format

This is the format that an import takes if creating a new Fantom Document.

#### Parameter Tolerance

When importing into Fantom format, there may be structural limitations where if you wanted to ensure all parameters were converted perfectly, you'd end up with multiple Patches/Presets being created, perhaps in more of a mess than you prefer.

Setting Parameter Tolerance to a higher percentage gives some grace to these parameters so the conversion will be a little exact but you'll wind up with a cleaner organization that will be more usable to you.

#### Use Custom Editor for Sample Edits

This is the app that you'll use for editing samples within the Fantom Document. Good sample editors are SoundForge (Mac/Windows), Peak (Mac), DSP Quattro (Mac), Audacity (Mac/ Windows), Adobe Audition (Mac/Windows) and more.

#### Color Keyboard with selected Multisample Ranges

Usually this is set to be on. This colors the onscreen Keyboard with the ranges of the Samples within the currently selected Multisample.

#### Autoload Multisamples when selected

Checking this has the Fantom Player load Multisamples as they are selected, allowing you to audition them via MIDI.

#### Middle C displays as...

On some samplers/keyboards, middle C is defined as C4 (usually U.S.) while others it is C3. All Fantoms show it as C3, and by default this is what is shown throughout the program through any Note Number (i.e. A#5, E1, etc.) However, you may feel comfortable seeing it as C4. This control sets the display of Note Numbers program-wide.

#### Check For Updates

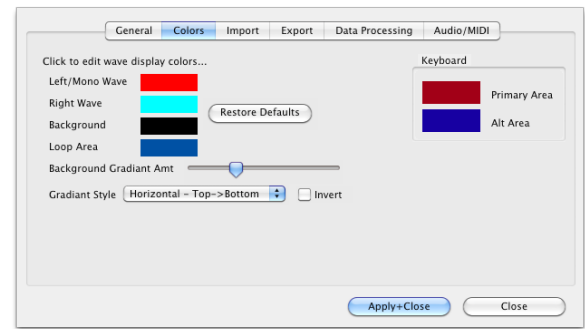
Unchecking this turns off Fantom Creator checking for updates automatically when starting up.



## Colors Tab

**Might as well make your Wave Display look great, right?** These are the options you have on what your Wave Display looks like.

---



## Import Tab

### Import Mapping Type

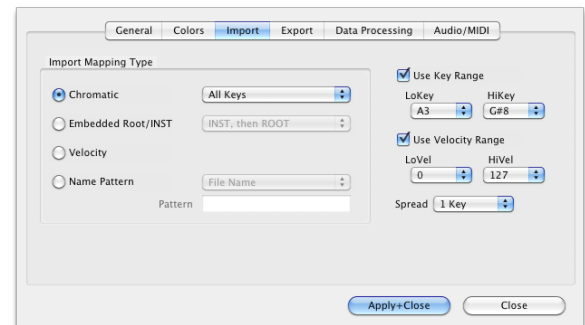
When adding samples to a Multisample, this option allows you to select and operate many different informational mechanisms to map the samples where you want them to go.

**Chromatic:** This simply puts each sample on single notes, from lowest to highest. You also have the option of selecting all keys, only white keys, or only black keys.

**Embedded Root/INST:** Pays attention to RootKey or INST chunk information embedded in the incoming files. An INST chunk contains LoKey, HiKey, LoVel, and HiVel information, but is relatively rare in sample files.

**Velocity:** Instead of mapping on adjacent keys, it will map on a single key, into adjacent velocity ranges.

**Name Pattern:** Looks into the File Name and tried to detect the pattern listed in the text box below.



### Use Key Range

This is the keyrange limits placed on imported samples. This means all samples placed will not exist outside these limits. If this is not checked, they are assumed as 0-127.

### Use Velocity Range

This is the velocity range limits placed on imported samples. This means all samples placed will not exist outside these limits. If this is not checked, they are assumed as 0-127.

### Spread

This determines the default spread between LoKey and HiKey the sample will receive.

---

## Export Tab

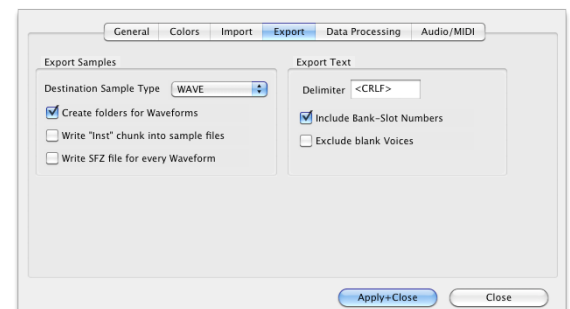
### Destination Sample Type

Fantom Creator allows you to export the samples in the Fantom Document out into single samples; this option selects the type. They can be WAVE, AIFF, CAF, or Akai SND files.

### Create Folder for Multisamples

If this is checked, Fantom Creator will organize the samples per Multisample and put them into folders named after the Multisamples. Otherwise, the samples in the Fantom Document will just be written flat.

**Write "Inst" chunk into sample files** Although this is not used often in musical circles, a WAVE or AIFF file can hold keyrange/velocity range information for a sample. When checked, Fantom Creator will write this chunk into the sample. There is no effect the sound of the sample, but preserves it if it will be used again in the same context.



## Write SFZ file for every Multisample

This can be handy if you want to observe the layout of each Multisample, or perhaps if you want to import it into another sampler.

## Export Text

This controls the listing option in Fantom Creator. You can export a formatted list of the contents of a Fantom Document for organizational purposes.

## Delimiter

This controls the way the linefeeds are written for separated textual lines.

## Include Bank - Slot Numbers

A Bank - Slot number is formatted like this: USER1:D14; checking this puts it into the document.

## Exclude Blank Patches

Sometimes the User banks have a lot of Patches or Performances with INIT has it's name and they don't include anything in them. This option eliminates them from the list.

---

## Data Processing Tab

Fantom Creator can import WAVE/AIFF files that have not been beat detected (that is, the transients have not been calculated) and Fantom Creator will detect those transients and import them just like Recycle/ACID/AppleLoops.

But, let's talk about what a "slice file" (a Recycle file, ACID file, or AppleLoop) is.

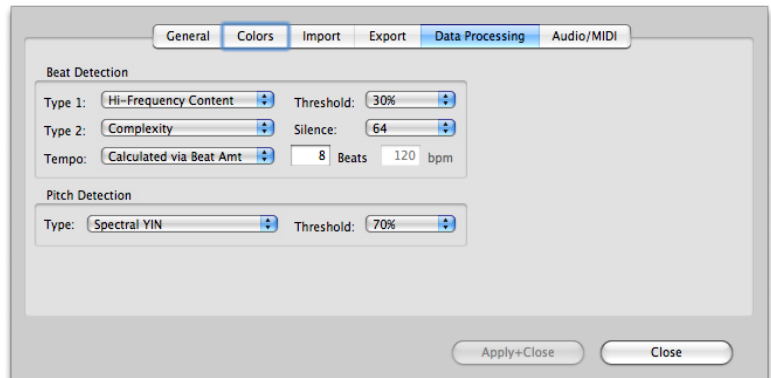
### What Is A Slice File

A WAVE or AIFF file is simply a piece of audio data. And any "slice file", such as a Recycle file, ACID file, AppleLoop, or Stylus RMX file, are just pieces of audio data as well.

The only difference between a regular sample file and a slice file is that a slice file has markers written in a information chunk in the file. These markers are placed strategically where transients (sharp sounds) in the file start, so a player that reads slice files knows where the slices are. This is how a Slice File can be played back at various tempos: the player plays back a slice at the position the tempo dictates. At faster tempos, the slices fade out to make way for the next slice; at slower tempos, there is a gap between the slices. (However, some players artificially add sample data to "plug the holes". Also, good Slice Files are originally recorded at the slowest tempo reasonably allowed, so they never have to be played back at a slower tempo than their "unity tempo".)

To create a Slice File, one has to "slice" the audio into slices of energy ("beats") so the playback engine plays it back in a way that makes rhythmic sense. This requires a beat detector.

Slice editors, most notably Recycle, but also ACID itself and the AppleLoop Utility that Apple provides, have beat detection. They do 2 things: They beat-detect a sound file, plus they can play the slice files back at different tempos. They do this with the assistance of the detected markers. Once you have what you want, then you save into a slice file, where the audio stays constant but the markers are written in the file. So when a slice player reads the file, the slices are the secret to it's capability to play them back at any tempo.



### Fantom Creator's Beat Detection

Fantom Creator has a Beat Detector, giving you the ability to import WAVE/AIFF files just like Slice Files.

It is vitally important to pay attention to these Beat Detector preferences. The defaults work for most clear and simple beats, but they definitely will not work with everything. You will need to experiment with these on a case-by-case basis, but keep trying, there usually is a solution to any rhythmic piece of data. Here is the explanation of the Beat Detector's parameters:

**Type:** The Beat Detector uses two passes through the audio to detect beats. The first pass does the best detection it can, then the second pass "checks" the results.

**Threshold:** This is like the Sensitivity control on Recycle and other slice editors. Higher values produce less detection, lower values produce more detection.

**Silence:** This is terms of samples. This is the MINIMUM amount of samples that need to exist between markers. If you are getting lots of "double beats", raise this value.

**Tempo:** You can bypass the whole detection thing and just put slice points at beat values, regardless of whether a burst of energy exists at that point.

Importing Slice Files is not as perfect as it appears. But it is very doable, don't let these options deter you.

### Pitch Detection

Pitch Detection is helpful making a chromatic instrument out of bunches of WAVE/AIFF files. Try dropping a host of WAV files of (say) a multisampled trumpet, and Fantom Creator detects the pitch of each sample and places it on the appropriate MIDI key for it's pitch, and then sets KeyRanges to fill up the spaces in-between the notes. All of a sudden, you have a trumpet sound on for your Fantom without the work of applying the proper rootkey and keyranges.

The Pitch Detection parameters determine how accurate or precise the pitch detection is. Pitch detection does rely on certain variables so different types and styles of pitch detection do a better or worse job than others. Try what seems best for you.

## Audio/MIDI Tab

### Audio Driver Types

These are the Sound Driver types on your system. Selecting one shows the Audio Outputs and Audio Inputs in the lists to the right.

### Audio Outputs

These are the outputs on your system for the selected Audio Driver Type. Selecting one selects the audio output for your app.

### Audio Inputs

These are the inputs on your system for the selected Audio Driver Type. Selecting one selects the audio input for your app.

### Audio Properties

Shows the Properties of the Output or Input that is selected on the left.

### MIDI In/Out Drivers

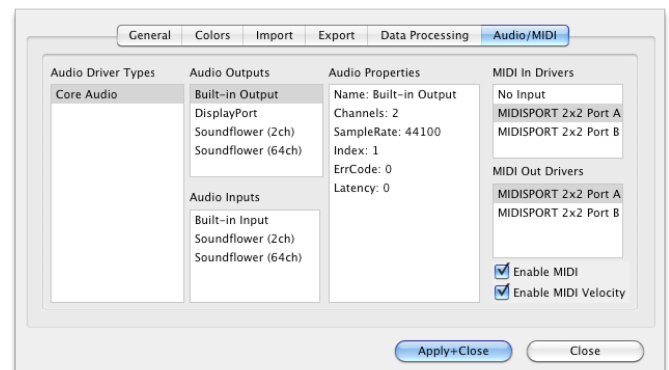
Allows you to select the current MIDI In or Out drivers that will drive the MC Player

### Enable MIDI

Enables MIDI communication.

### Enable MIDI Velocity

When unchecked, all MIDI notes coming in will be Velocity=127 in value.



*(This page is intentionally left blank.)*



## Troubleshooting

Your **Fantom Creator™** program should be rock-solid and give you no problems. However, there is always stuff that can go wrong.

You can start from scratch as far as Preferences go by trashing your preferences. You can do that by:

### Mac

Go to:

**/Users/[you]/Library/Preferences**, delete **com.chickensys.fantomcreator.plist**

### Windows

Go into the Registry and delete the

**HKEY\_CURRENTUSER/Software/Chicken Systems, Inc/Fantom Creator** key.

### Mac and Windows

Press SHIFT when starting the program.

These techniques only trash your working preferences; they do not trash your auth codes etc. For all other queries, please contact Chicken Systems Technical Support at the contact points listed under Contacting Technical Support in this document.

---

## FAQ

There is a Fantom Creator™ FAQ up on the Chicken Systems Web site:

[www.chickensys.com/support/software/Fantomcreator/faq](http://www.chickensys.com/support/software/Fantomcreator/faq)

We revise this as needed, based on common questions previously asked about the Fantom Creator™.

It is extremely **LIKELY** that your question is answered here! Please do not contact us until you have read completely through this resource. It probably will answer your question.

---

## Bug Reports

Fantom Creator™ should not crash or show errors, but reality insists that all applications do at some point. Fantom Creator™, since it sometimes deals with many undocumented formats and files created from many sources, can be especially vulnerable.

If you have a problem with a Fantom Document, or receive an error within Fantom Creator™ concerning a file, the **BEST** way to communicate that is to file a Bug Report and send us Bank or Instrument Project file, with a brief description of what the problem is.

To use the Bug Reports system, go to Help-Bug Reports in the program. It connects you to our Bug Reports website, has a form you fill out that gets the information we need from you, and permits you to send us the source file directly from that web page.

We recommend you to use Bug Reports the page first. We do invite you to email us or call us with a problem, but most of the time we just direct people to the Bug Reports web site to document the information in writing and for them to send us the file. Fantom Creator has many users across the globe, and it is not possible to track all our users particular questions and issues through personal correspondence.

Once you establish an issue with the Bug Reports web site, you will get an email back with a link to your issue that you can consistently check on. We try to address and close issues within 24-48 hours.

**BUT, THE IMPORTANT THING IS TO ENABLE US TO EXACTLY REPLICATE YOUR ISSUE ON OUR END! THIS IS WHY WE NEED THE SOURCE FILE IN ALL CASES. PLEASE REMEMBER THIS!**

**Bug Reports Page:** [www.chickensys.com/fantomcreator/bugreports](http://www.chickensys.com/fantomcreator/bugreports)

**Email:** [support@chickensys.com](mailto:support@chickensys.com)

**FTP:** [ftp.chickensys.com](ftp://chickensys.com)

(please make sure file names DO NOT have spaces in them!)

User: incoming@samplerzone.com

Pass: filesend123

## Additional Notes

Again, we make a special effort to analyze files and comment or fix the problem with 24 business hours through our Bug Reports page listed above.

Regarding larger files: they are easier to FTP than to e-mail, although our systems can handle either method of any size without problem. The Bug Reports web site can handle any size. Any email limitation is usually on your end. If you FTP a file, make sure that the filename DOES NOT have spaces in it. This is a natural limitation of the Internet and FTP servers in general.

Please give us a brief complete explanation of the problem. We try to answer all emails within 24 hours. Please be patient if the answer does not arrive immediately.

**Chicken Systems, Inc.**  
**Rubber Chicken Software Co.**  
Serving Professional Samplers  
888-496-6295 • 320-235-9776  
Fax - 262-438-7489  
[support@chickensys.com](mailto:support@chickensys.com)

HOME PRODUCTS SUPPORT DOWNLOADS FORUM NEWS COMPANY

### Translator™ Bug Reports

**Thank you!** We are really pleased to hear of bug reports. It helps us pinpoint any problems, and also it helps other Translator users. Please accurately complete all fields on this form.

**Please submit a file!** Although a file is not mandatory, **please** include one so we have the exact file to check. To insure your file gets through to us, **always** Zip or Stuff the file(s) you submit into a single archive.

**Use the latest version of Translator** Before you submit any report, **please** make sure you are using the latest version and build of Translator. **The latest Mac version is 5.9.36 and the latest Windows version is 2.9.124.** To update, use the Check-For-Updates function within your program (under Help) or use the URL that is listed in the Manual/Help file under Updating.

**Check your Report** This bug report will be entered into our bug database; you will be emailed a copy and an issue number and a link so you can check on the progress at any time.

Issue Number: 4271

Name:

Email Address:

Type Date (mm-dd-yyyy):

Submitted Date: Fri, 2 Apr 2010 8:51:1 -0600

Translator Version:  Bug:

and Build Number: (example: Version 2.5, Build 32)

Translator Platform: ☒ Windows ☐ Mac

Source Format:

Destination Format:

Source File (optional, but strongly recommended):

Do not type the file name in; use this Browse button to select your zip/stuffed file from your hard drive.

Subject:

Brief Description:

## Contacting Technical Support

Chicken Systems Technical Support can be reached in many ways: **Phone, Email, Chat**, or via our SamplerZone.com **Forum**. Please give us a brief complete explanation of the problem. With Email and Forum questions, we try to respond within 24 hours, Please be patient if the answer does not arrive immediately.

You may Phone or Chat with us also if, after reading and looking at the documentation, you are stumped. Our usual office hours are 8am-6pm Monday-Friday. We are often in the office on weekends and holidays on an infrequent basis.

**Phone:** 800-877-6377 United States, 320-235-9798 elsewhere.  
Please do not mind the crabby technical support engineers.  
**Email:** [support@chickensys.com](mailto:support@chickensys.com)  
**Chat:** [www.chickensys.com](http://www.chickensys.com), use the Chat link on the bottom  
**Forum:** [www.samplerzone.com/forums/fantomcreator](http://www.samplerzone.com/forums/fantomcreator)

# Updating

We update Fantom Creator™ as needed, for bug fixes, improvements, and additions to the library.

Fantom Creator™ automatically checks if there is a update available when you start it up. (If desired, you can turn this checking off in Preferences.) You can also check for updates by selecting Check for Updates under the Help menu. (This only works, of course, if you are connected to the Internet on that computer.)

If your Fantom Creator™ computer is not connected to the Internet, or for some reason you can't run Fantom Creator™, you can check for updates at:

[www.chickensys.com/fantomcreator/userupdates](http://www.chickensys.com/fantomcreator/userupdates)

You can check what is your Fantom Creator™ version number by checking the About Box (under Help in Windows and under the App Menu on Mac), or by checking Get Info [Mac] or Properties [Windows].

If there is an update available for you, you can download it and then move it to your program's computer (if from a different computer). Run the updater and your program should be updated.

# Contact Us

**Chicken Systems, Inc.**

714 5th Street SE  
Willmar, MN 56201

**Phone:** 800-877-6377 United States, 320-235-9798 elsewhere.  
**Email:** [support@chickensys.com](mailto:support@chickensys.com)  
**Chat:** [www.chickensys.com](http://www.chickensys.com), use the Chat link on the bottom of the page  
**Forum:** [www.samplerzone.com/forumdirector/fantomcreator.html](http://www.samplerzone.com/forumdirector/fantomcreator.html)

# Credits

Developing software is at the core a one-man process, but making it good requires a team.

**Fantom Creator™** really benefitted from good teamwork and solid commitment to quality software.

**Garth Hjelte:** Project Lead

**Jeff Godbloch:** Programming and Technical Writer

**Roger Weingarten:** Programming

And thanks to:

**Dan Phillips at Roland US** for the opportunity, technical advice, and much much help.

**Karim** for lots of phone time and excellent suggestions.

**Everyone at Fantom Clan** for their ideas and encouragement.

And...

**Cheryl Ann Mays** at SamplerZone for the best sales team ever

**Sandi Tepper** with Provare Technology

**Christian Schmitz, Glenn Austin, Joe Strout** for prompt, clear, concise technical assistance

**Dan Dean** and **Ernest Cholakis** for timely feedback and friendship

**David Viens** at **Plogue** for SFZ assistance

**Kyle Zambora** at **Nine Volt Audio** for great ideas and partnership

**Larry Hopkins** for more great ideas and hospitality

**Native Instruments, Digidesign, Eastwest, Akai/Alesis, Kurzweil,** and **Emu** product managers and technical support crews for their thoroughness and assistance.